

Department of

LABORATORY RECORD

Name : _____

Year : _____

Semester : _____

Branch : _____

University Register No.

Roll No.

Certified that this is the bonafide record of the work done by the above student in
_____ laboratory during the year _____

Signature of Faculty In-charge

Signature of HOD

Submitted for Practical Examination held on _____ at Chettinad
College of Engineering & Technology.

Internal Examiner

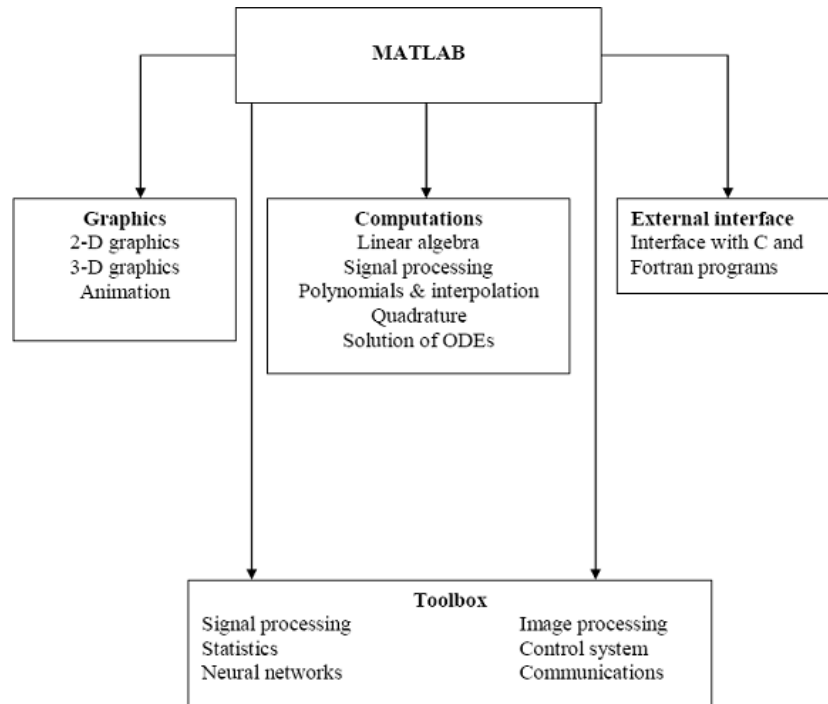
External Examiner

INDEX
LIST OF EXPERIMENTS

S. No	Date	Name of the Experiment	Page no	Marks	Signature
1		Generation of Discrete Time Signals			
2		Correlation of Sequences			
3		Linear and Circular Convolutions			
4		Spectrum Analysis using DFT			
5a		Design of FIR Filters (rectangular window design)			
5b		Design of FIR Filters (Hanning window design)			
6a		Design of IIR Butterworth Filters			
6b		Design of IIR Chebyshev Filters			
7		Study of Architecture of Digital Signal Processor			
8		MAC Operation using Various Addressing Modes			
9		Generation of various signals and random noise			
10		Design of FIR Filters			
11		Design of IIR Filters			
12a		Up-sampling			
12b		Down-sampling			

INTRODUCTION

MATLAB is a software package for high performance numerical computation and visualization provides an interactive environment with hundreds of a built in functions for technical computation, graphics and animation. The MATLAB name stands for Matrix laboratory.



At its core, MATLAB is essentially a set (a “toolbox”) of routines (called “m files” or “mex files”) that sit on your computer and a window that allows you to create new variables with names (e.g. voltage and time) and process those variables with any of those routines (e.g. plot voltage against time, find the largest voltage, etc).

It also allows you to put a list of your processing requests together in a file and save that combined list with a name so that you can run all of those commands in the same order at some later time. Furthermore, it allows you to run such lists of commands such that you pass in data. and/or get data back out (i.e. the list of commands is like a function in most programming languages). Once you save a function, it becomes part of your toolbox. For those with computer programming backgrounds: Note that MATLAB runs as an interpretive language (like the old BASIC). That is, it does not need to be compiled. It simply reads through each line of the function, executes it, and then goes on to the next line.

DSP Development System

- Testing the software and hardware tools with Code Composer Studio
- Use of the TMS320C6713 DSK
- Programming examples to test the tools

Digital signal processors such as the TMS320C6x (C6x) family of processors are like fast special-purpose microprocessors with a specialized type of architecture and an instruction set appropriate for signal processing. The C6x notation is used to designate a member of Texas Instruments' (TI) TMS320C6000 family of digital signal processors. The architecture of the C6x digital signal processor is very well suited for numerically intensive calculations. Based on a very-long-instruction-word (VLIW) architecture, the C6x is considered to be TI's most powerful processor. Digital signal processors are used for a wide range of applications, from communications and controls to speech and image processing. The general-purpose digital signal processor is dominated by applications in communications (cellular). Applications embedded digital signal processors are dominated by consumer products. They are found in cellular phones, fax/modems, disk drives, radio, printers, hearing aids, MP3 players, high-definition television (HDTV), digital cameras, and so on. These processors have become the products of choice for a number of consumer applications, since they have become very cost-effective. They can handle different tasks, since they can be reprogrammed readily for a different application.

DSP techniques have been very successful because of the development of low-cost software and hardware support. For example, modems and speech recognition can be less expensive using DSP techniques. DSP processors are concerned primarily with real-time signal processing. Real-time processing requires the processing to keep pace with some external event, whereas non-real-time processing has no such timing constraint. The external event to keep pace with is usually the analog input. Whereas analog-based systems with discrete electronic components such as resistors can be more sensitive to temperature changes, DSP-based systems are less affected by environmental conditions.

DSP processors enjoy the advantages of microprocessors. They are easy to use, flexible, and economical. A number of books and articles address the importance of digital signal processors for a number of applications. Various technologies have been used for real-time processing, from fiber optics for very high frequency to DSPs very suitable for the audio-frequency range. Common applications using these processors have been for frequencies from 0 to 96kHz. Speech can be sampled at 8 kHz (the rate at which samples are acquired), which implies that each value sampled is acquired at a rate of $1/(8 \text{ kHz})$ or 0.125ms. A commonly

used sample rate of a compact disk is 44.1 kHz. Analog/digital (A/D)- based boards in the megahertz sampling rate range are currently available.

Ex. No: 1

Date :

GENERATION OF DISCRETE TIME SIGNALS

AIM:

To generate a discrete time signal sequence (Unit step, Unit ramp, Sine, Cosine, Exponential, Unit impulse) using MATLAB function.

APPARATUS REQUIRED:

HARDWARE : Personal

Computer SOFTWARE: MATLAB

PROCEDURE:

1. Start the MATLAB program.
2. Open new M-file
3. Type the program
4. Save in current directory
5. Compile and Run the program
6. If any error occurs in the program correct the error and run it again
7. For the output see command window\ Figure window
8. Stop the program.

PROGRAMS: (GENERATION OF BASIC SIGNALS)

%Program for generation of unit impulse signal

```
t=-3:1:3;  
y=[zeros(1,3),ones(1,1),zeros(1,3)];  
subplot (2, 2,1);  
stem (t,y);  
ylabel('amplitude');  
xlabel('time period');  
title('unit impulse')
```

%Program for generation of unit step signal

```
n=input('enter the sample length of unit step sequence');  
t=0:1:n-1;  
y=ones(1,n);  
subplot(2,2,2);  
stem(t,y);  
ylabel('amplitude');  
xlabel('sequence');  
title('unit step')
```

```
%Program for generation of unit ramp signal
n1=input('enter the sample length of unit ramp sequence');
t=0:n1;
subplot(2,2,3);
stem(t,t);
ylabel('amplitude');
xlabel('sequence');
title('unit ramp')
```

```
%Program for generation of discrete exponential signal:
n2=input('enter the length of the exponential sequence');
t=0:n2;
a=input('enter the a value');
y2=exp(a*t);
subplot(2,2,4);
stem(t,y2);
ylabel('amplitude');
xlabel('time period');
title('exponential sequence')
```

```
%Program for generation of continuous exponential signal:
n3=input('enter the length of the exponential sequence');
t=0:2:n3-1;
a=input('enter the a value');
y3=exp(a*t);
subplot(3,1,1);
stem(t,y3);
ylabel('amplitude');
xlabel('time period');
title('continuous exponential sequence')
```

```
%Program for generation of sine wave
t=0:0.01: pi;
y=sin(2*pi*t);
subplot(3,1,2);
stem(t,y);
ylabel('amplitude');
xlabel('time period');
title('sine wave')
```

```
%Program for generation of cosine wave
t=0:0.01: pi;
y=cos(2*pi*t);
subplot(3,1,3);
stem(t,y);
ylabel('amplitude');
xlabel('time period');
title('cosine wave')
```

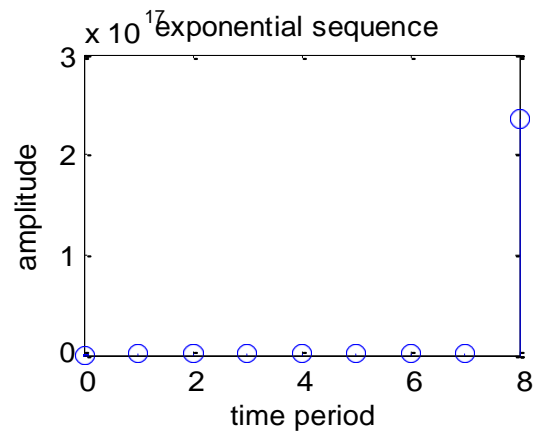
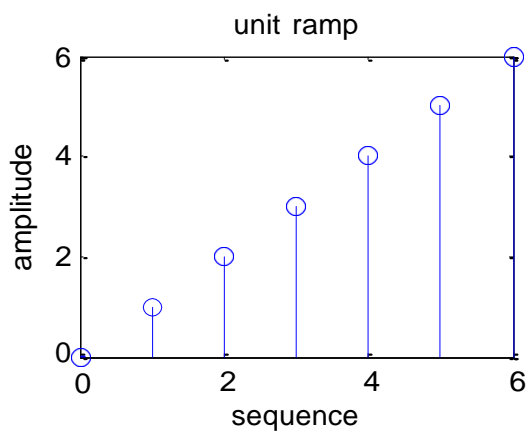
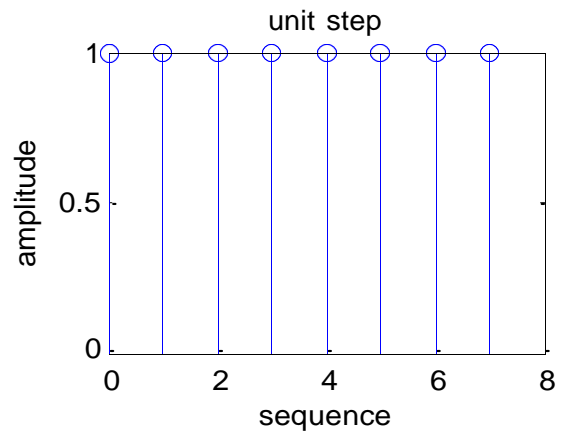
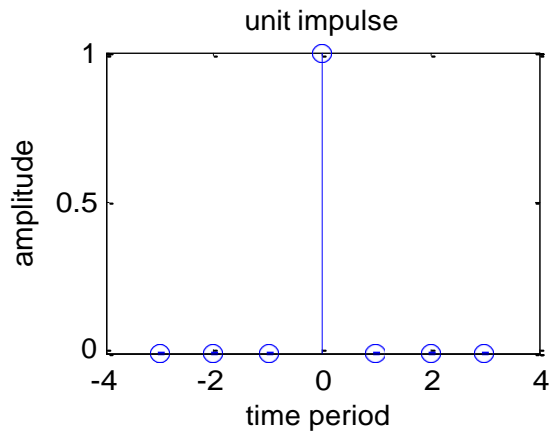
OUTPUT: (DISCRETE SIGNALS)

Enter the sample length of unit step sequence 8

Enter the length of ramp sequence 6

Enter the length of the exponential sequence 8

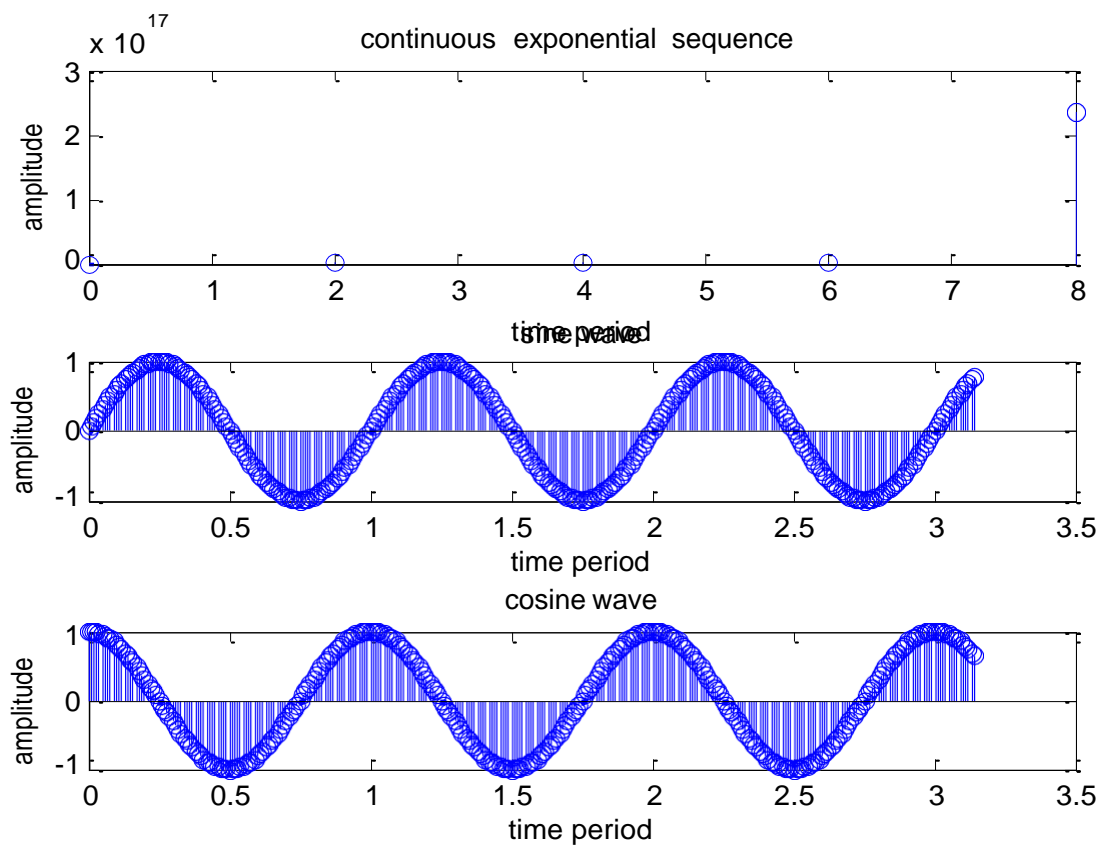
Enter the a value 5



OUTPUT: (CONTINUOUS SIGNALS)

Enter the length of continuous exponential sequence 10

Enter the a value 5



RESULT:

Thus the MATLAB programs for discrete time signal sequence (Unit step, Unit ramp, Sine, Cosine, Exponential, Unit impulse) using MATLAB function written and the results were plotted.

Ex. No: 2

Date:

CORRELATION OF SEQUENCES

AIM:

To write MATLAB programs for auto correlation and cross correlation.

APPARATUS REQUIRED:

HARDWARE : Personal Computer

SOFTWARE : MATLAB R2014a

PROCEDURE:

1. Start the MATLAB program.
2. Open new M-file
3. Type the program
4. Save in current directory
5. Compile and Run the program
6. If any error occurs in the program correct the error and run it again
7. For the output see command window\ Figure window
8. Stop the program.

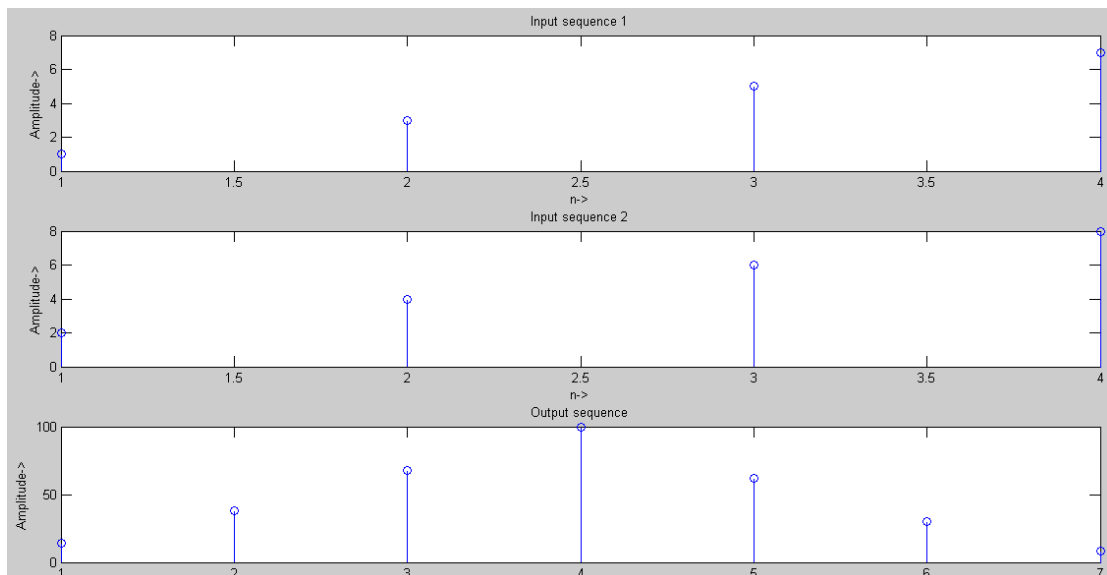
PROGRAM: (Cross-Correlation of the Sequences)

```
clc;
clear all;
close all;
x=input('Enter the sequence 1: ');
h=input('Enter the sequence 2: ');
y=xcorr(x,h);
figure;
subplot(3,1,1);
stem(x);
xlabel('n->');
ylabel('Amplitude->');
title('Input sequence 1');
subplot(3,1,2);
stem(fliplr(y));
stem(h);
xlabel('n->');
ylabel('Amplitude->');
title('Input sequence 2');
subplot(3,1,3);
stem(fliplr(y));
xlabel('n->');
ylabel('Amplitude->');
title('Output sequence');
disp('The resultant is');
fliplr(y);
```

OUTPUT: (Cross-Correlation of the Sequences)

Enter the sequence 1: [1 3 5 7]

Enter the sequence 2: [2 4 6 8]

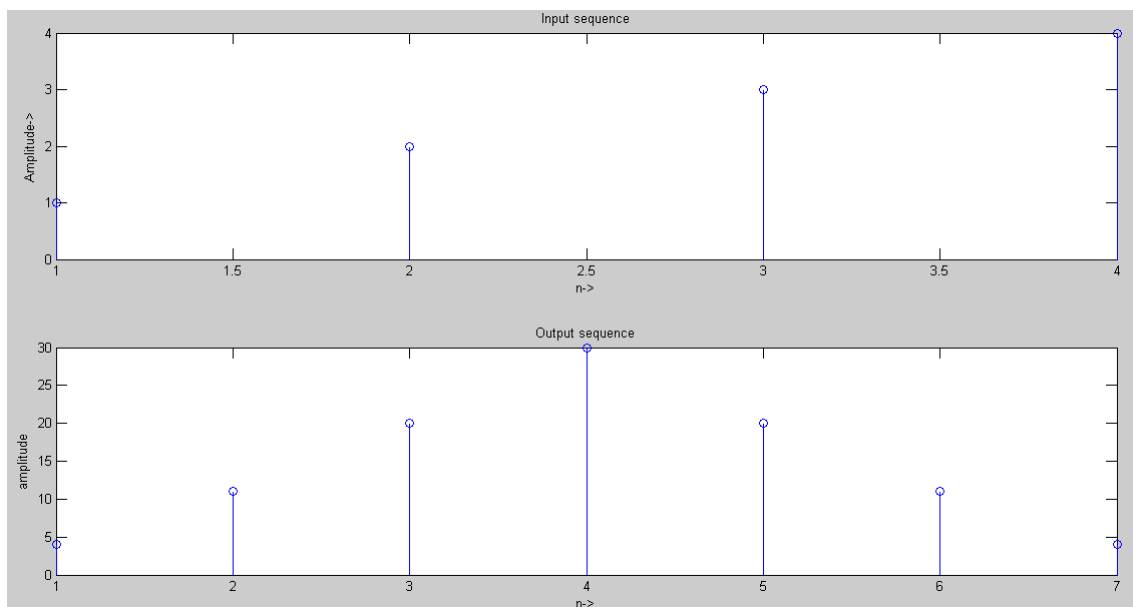


PROGRAM: (Auto Correlation Function)

```
clc;  
close all;  
clear all;  
x=input('Enter the sequence 1: ');  
y=xcorr(x,x);  
figure;  
subplot(2,1,1);  
stem(x);  
ylabel('Amplitude->');  
xlabel('n->');  
title('Input sequence');  
subplot(2,1,2);  
stem(fliplr(y));  
ylabel('amplitude');  
xlabel('n->');  
title('Output sequence');  
disp('the resultant is ');  
fliplr(y);
```

OUTPUT: (Auto Correlation Function)

Enter the sequence [1 2 3 4]



RESULT:

Thus the MATLAB programs for auto correlation and cross correlation written and the results were plotted.

Ex. No: 3

Date:

LINEAR AND CIRCULAR CONVOLUTIONS

AIM:

To write MATLAB programs to find out the linear convolution and Circular convolution of two sequences.

APPARATUS REQUIRED:

HARDWARE : Personal Computer

SOFTWARE : MATLAB R2014a

PROCEDURE:

1. Start the MATLAB program.
2. Open new M-file
3. Type the program
4. Save in current directory
5. Compile and Run the program
6. If any error occurs in the program correct the error and run it again
7. For the output see command window\ Figure window
8. Stop the program.

```
%Program for linear convolution
%to get the input sequence
n1=input('enter the length of input sequence');
n2=input('enter the length of impulse sequence');
x=input('enter the input sequence');
h=input('enter the impulse sequence');
```

```
%convolution operation
y=conv(x,h);
%to plot the signal
subplot(3,1,1);
stem(x);
ylabel('amplitude');
xlabel('n1. ..>');
title('input sequence')
subplot(3,1,2);
stem(h);
ylabel('amplitude');
xlabel('n2. ..>');
title('impulse signal')
subplot(3,1,3);
stem(y);
ylabel('amplitude');
xlabel('n3');
disp('the resultant signal is');y
```

```

%circular convolution
clc;
clear all;
close all;
%to get the input sequence
g=input('enter the input sequence');
h=input('enter the impulse sequence');
N1=length(g);
N2=length(h);
N=max(N1,N2);
N3=N1-N2
%loop for getting equal length sequence
if(N3>=0)
h=[h,zeros(1,N3)];
else
g=[g,zeros(1,-N3)];
end
%computation of circular convoluted sequence
for n=1:N;
y(n)=0;
for i=1:N;
j=n-i+1;
if(j<=0)
j=N+j;
end
y(n)=y(n)+g(i)*h(j);
end
end
figure;
subplot(3,1,1);
stem(g);
ylabel('amplitude');
xlabel('n1..>');
title('input sequence')
subplot(3,1,2);
stem(h);
ylabel('amplitude');
xlabel('n2');
title('impulse sequence')
subplot(3,1,3);
stem(y);
ylabel('amplitude');
xlabel('n3');
disp('the resultant signal is');

```

OUTPUT : LINEAR CONVOLUTION

Enter the length of input sequence 4

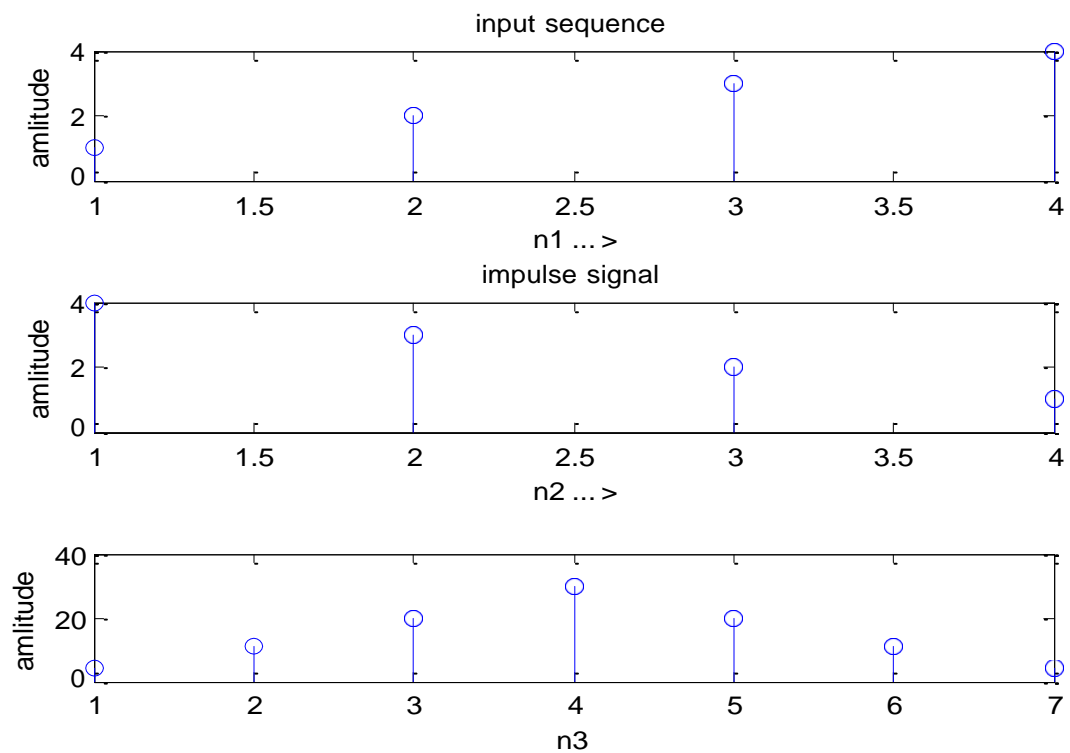
Enter the length of impulse sequence 4

Enter the input sequence [1 2 3 4]

Enter the impulse sequence [4 3 2 1]

The resultant signal is

y= 4 11 20 30 20 11 4



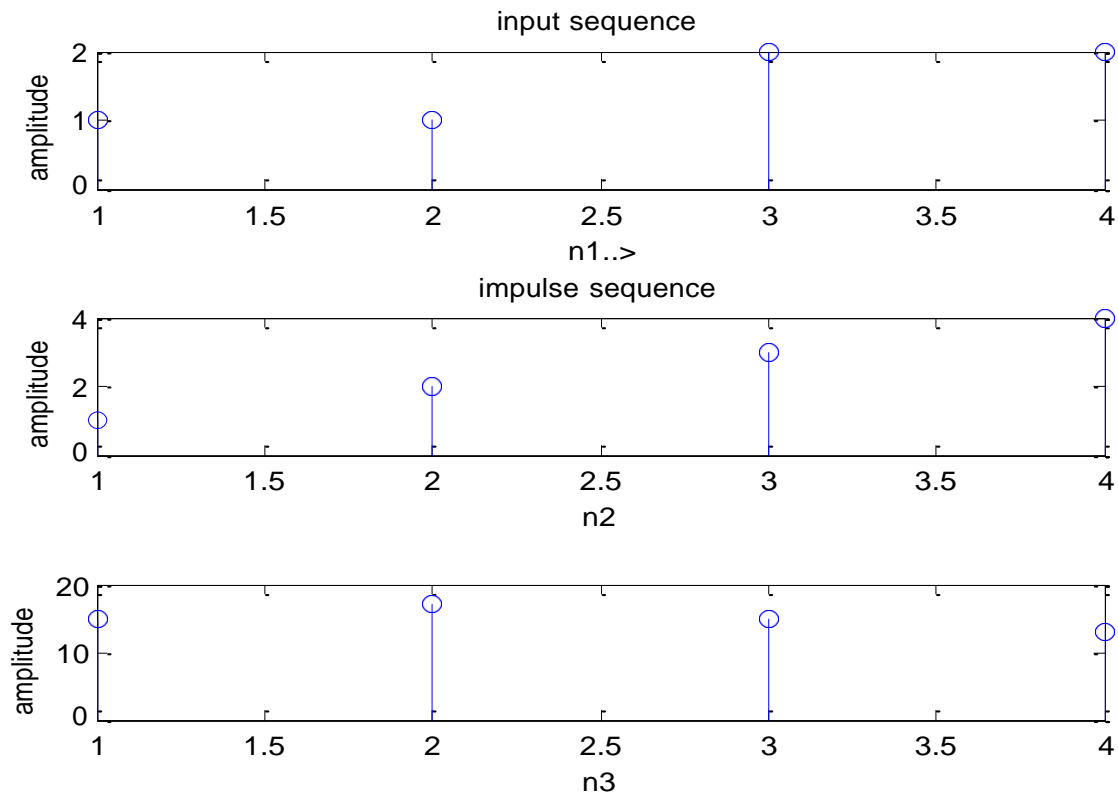
OUTPUT : CIRCULAR CONVOLUTION

Enter the input sequence [1 2 2 1]

Enter the impulse sequence [4 3 2 1]

The resultant signal is

y= 15 17 15 13



RESULT:

Thus the MATLAB programs for linear convolution and circular convolution written and the results were plotted.

Ex. No: 4

Date:

FREQUENCY ANALYSIS USING DFT

AIM:

To write MATLAB program for Frequency analyzing signal using DFT.

APPARATUS REQUIRED:

HARDWARE : Personal Computer

SOFTWARE : MATLAB

PROCEDURE:

9. Start the MATLAB program.
10. Open new M-file
11. Type the program
12. Save in current directory
13. Compile and Run the program
14. If any error occurs in the program correct the error and run it again
15. For the output see command window\ Figure window
16. Stop the program.

PROGRAM: (COMPUTATION OF FFT OF A SIGNAL)

%program for computation of fft

Clear all;

Close all;

xn=input('enter the input sequence');

n=input('enter the number of points in fft');

l=length(xn);

if (n<1)

disp(n>=1);

end

xk=fft(xn,n);

stem(xk);

xlabel('real axis');

ylabel('imaginary axis');

title('fft');

disp('the values. ...');xk

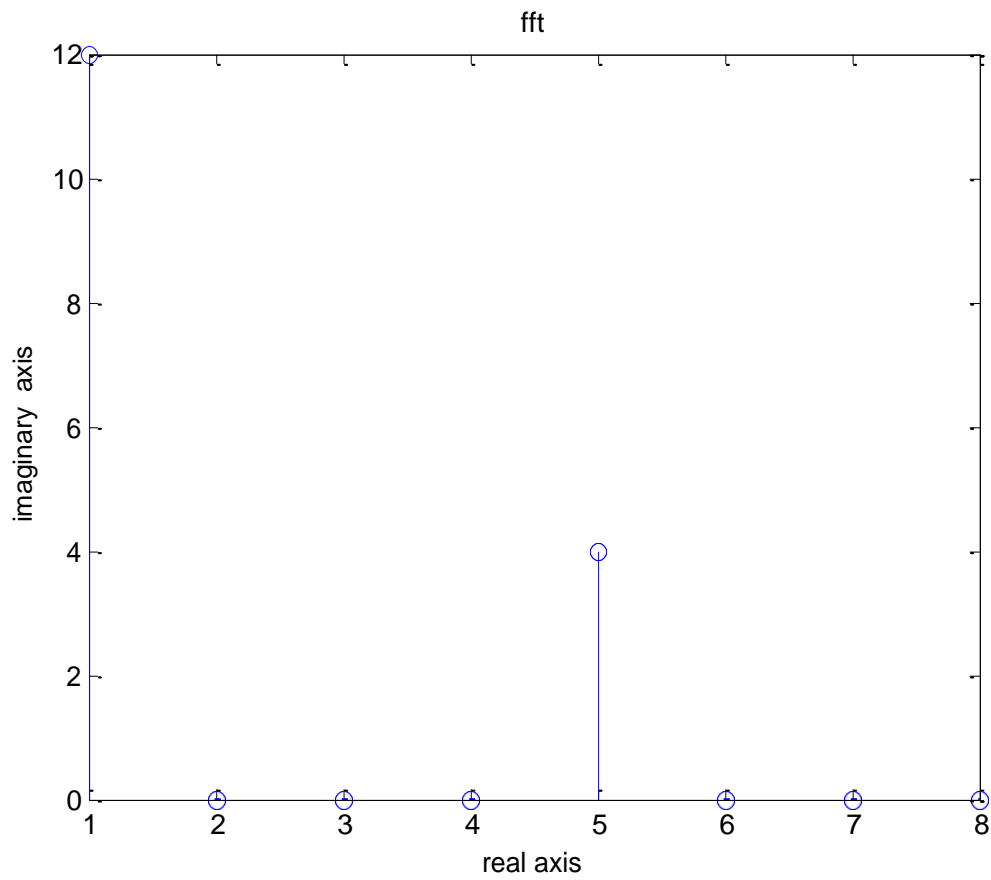
OUTPUT: (FFT)

Enter the input sequence [2 1 2 1 2 1 2 1]

Enter the number of points in fft 8

The values

Xk= 12 0 0 0 4 0 0 0



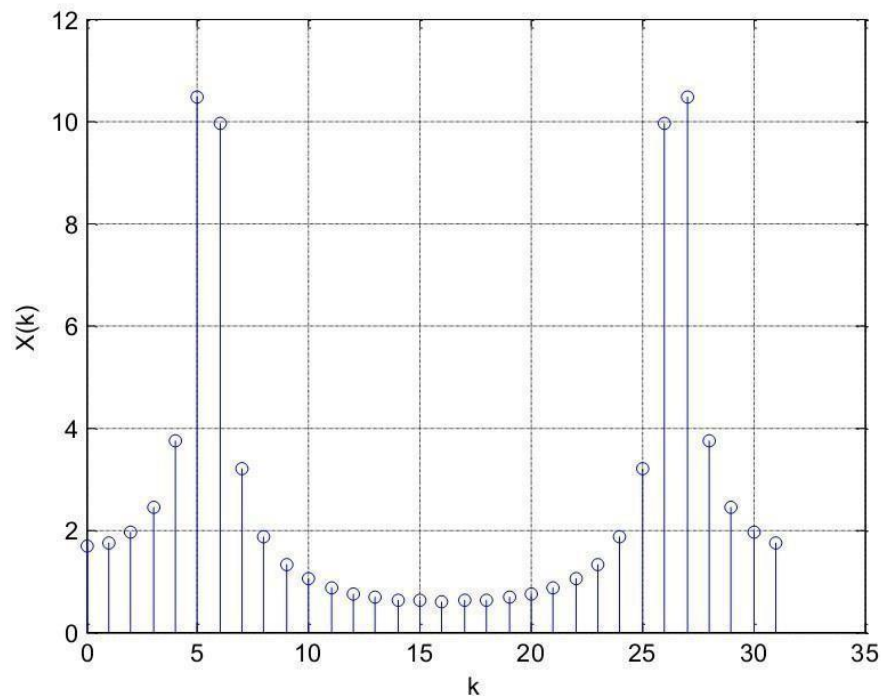
PROGRAM: (Spectrum Analysis Using DFT)

```
N=input('type length of DFT= ');  
T=input('type sampling period= ');  
freq=input('type the sinusoidal freq= ');  
k=0:N-1;  
f=sin(2*pi*freq*1/T*k);  
F=fft(f); stem(k,abs(F));  
grid on; xlabel('k');  
ylabel('X(k)');
```

INPUT:

type length of DFT=32 type
sampling period=64
type the sinusoidal freq=11

OUTPUT: (Spectrum Analysis Using DFT)



RESULT:

Thus the Spectrum Analysis of the signal using DFT is obtained using MATLAB.

Ex. No: 5a

Date:

**DESIGN OF FIR FILTERS
(RECTANGULAR WINDOW DESIGN)**

AIM:

To write a program to design the FIR low pass, High pass, Band pass and Band stop filters using RECTANGULAR window and find out the response of the filter by using MATLAB.

APPARATUS REQUIRED:

HARDWARE : Personal Computer

SOFTWARE : MATLAB R2014a

PROCEDURE:

1. Start the MATLAB program.
2. Open new M-file
3. Type the program
4. Save in current directory
5. Compile and Run the program
6. If any error occurs in the program correct the error and run it again
7. For the output see command window\ Figure window
8. Stop the program.

PROGRAM: (Rectangular Window)

%program for the design of FIR low pass, high pass, band pass and band stop filter using rectangular window

```
clc;
clear all;
close all;
rp=input('enter the passband ripple');
rs=input('enter the stopband ripple');
fp=input('enter the passband frequency');
fs=input('enter the stopband frequency');
f=input('enter the sampling frequency');
wp=2*fp/f;
ws=2*fs/f;
num=-20*log10(sqrt(rp*rs))-13;
dem=14.6*(fs-fp)/f;
n=ceil(num/dem);
n1=n+1;
if(rem(n,2)~=0)
    n1=n;
    n=n-1;
end;
y=boxcar(n1);
%lowpass filter
b=fir1(n,wp,y);
[h,o]=freqz(b,1,256);
m=20*log10(abs(h));
subplot(2,2,1);
plot(o/pi,m);
ylabel('gain in db. ...>');
xlabel('(a)normalized frequency ....>');

%highpass filter
b=fir1(n,wp,'high',y);
[h,o]=freqz(b,1,256);
m=20*log10(abs(h));
subplot(2,2,2);
plot(o/pi,m);
ylabel('gain in db. ....>');
xlabel('(b)normalized frequency .....>');

%bandpass filter
wn=[wp ws];0
b=fir1(n,wn,y);
[h,o]=freqz(b,1,256);
m=20*log10(abs(h));
subplot(2,2,3);
plot(o/pi,m);
ylabel('gain in db. ...>');
xlabel('(c)normalized frequency ...>');

%bandstop filter
b=fir1(n,wn,'stop',y);
```

```
[h,o]=freqz(b,1,256);
m=20*log10(abs(h));
subplot(2,2,4);
plot(o/pi,m);
ylabel('gain in db. ...>');
xlabel('(d)normalized frequency ....>');
```

OUTPUT: (Rectangular Window)

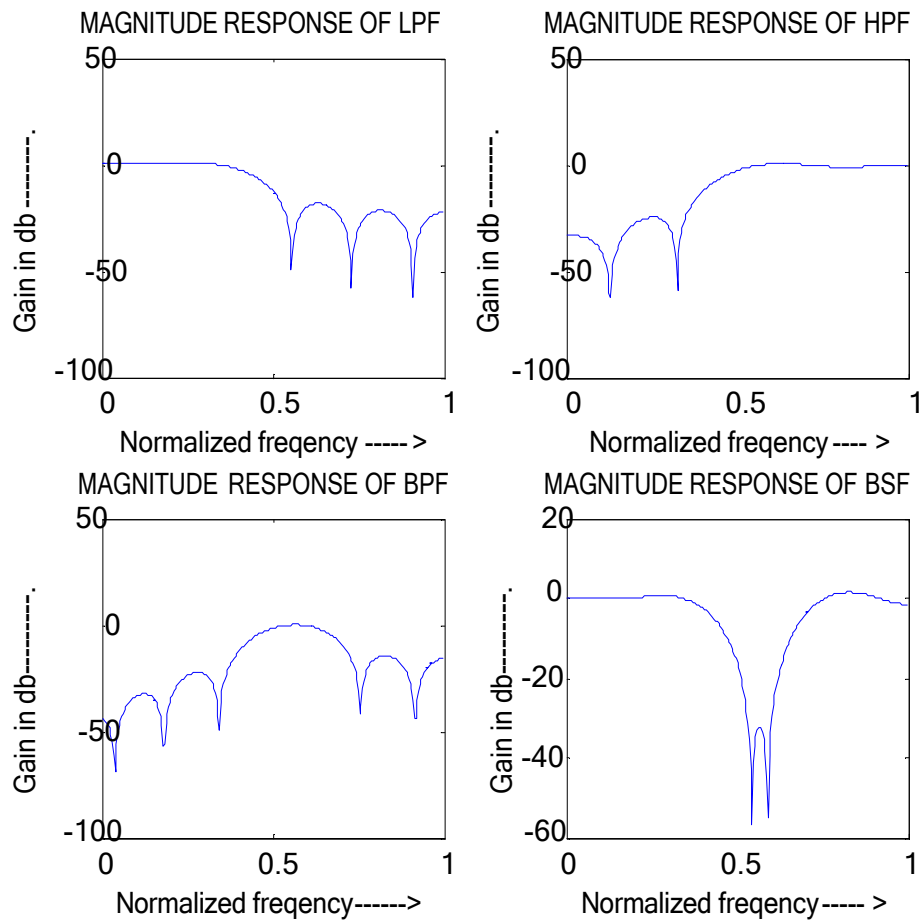
Enter the pass band ripple 0.03

Enter the stop band ripple 0.01

Enter the pass band frequency 1400

Enter the stop band frequency 2000

Enter the sampling frequency 8000



RESULT:

Thus the program to design FIR low pass, high pass, band pass and band stop Filters using RECTANGULAR Window was written and response of the filter using MATLAB was executed.

Ex. No: 5b

Date:

**DESIGN OF FIR FILTERS
(HANNING WINDOW DESIGN)**

AIM:

To write a program to design the FIR low pass, High pass, Band pass and Band stop filters using HANNING window and find out the response of the filter by using MATLAB.

APPARATUS REQUIRED:

HARDWARE : Personal Computer

SOFTWARE : MATLAB R2014a

PROCEDURE:

1. Start the MATLAB program.
2. Open new M-file
3. Type the program
4. Save in current directory
5. Compile and Run the program
6. If any error occurs in the program correct the error and run it again
7. For the output see command window\ Figure window
8. Stop the program.

PROGRAM: (Hanning Window)

%program for the design of FIR lowpass, high pass, band pass, band stop filter
using hanning window

```
clc;
clear all;
close all;
rp=input('enter the passband ripple');
rs=input('enter the stopband ripple');
fp=input('enter the passband frequency');
fs=input('enter the stopband frequency');
f=input('enter the sampling frequency');
wp=2*fp/f;
ws=2*fs/f;
num=-20*log10(sqrt(rp*rs))-13;
dem=14.6*(fs-fp)/f;
n=ceil(num/dem);
n1=n+1;
if(rem(n,2)~=0)
    n1=n;
    n=n-1;
end;
Y=hanning(n1);
```

%lowpass filter

```
b=fir1(n,wp,Y);
[h,o]=freqz(b,1,256);
m=20*log10(abs(h));
subplot(2,2,1);
plot(o/pi,m);
ylabel('gain in db. ...>');
xlabel('(a)normalized frequency');
```

%highpass filter

```
b=fir1(n,wp,'high',Y);
[h,o]=freqz(b,1,256);
m=20*log10(abs(h));
subplot(2,2,2);
plot(o/pi,m);
ylabel('gain in db. >');
xlabel('(b)normalized frequency >');
```

%bandpass filter

```
wn=[wp ws];
b=fir1(n,wn,Y);
[h,o]=freqz(b,1,256);
m=20*log10(abs(h));
subplot(2,2,3);
plot(o/pi,m);
ylabel('gain in db. ...>');
xlabel('(c)normalized frequency ...>');
```

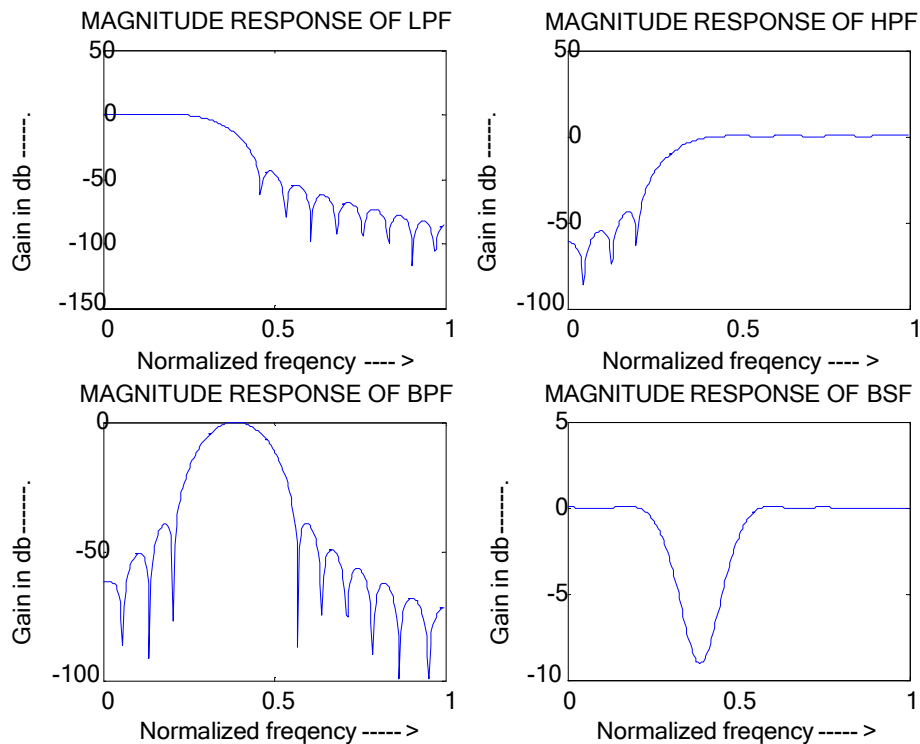
```

%bandstop      filter
b=fir1(n,wn,'stop',Y);
[h,o]=freqz(b,1,256);
m=20*log10(abs(h));
subplot(2,2,4);
plot(o/pi,m);
ylabel('gain in db...>');
xlabel('(d)normalized frequency >')

```

FIR : (HAMMING WINDOW)

Enter the pass band ripple 0.03
Enter the stop band ripple 0.01
Enter the pass band frequency 1400
Enter the stop band frequency 2000
Enter the sampling frequency 8000



RESULT:

Thus the program to design FIR low pass, high pass, band pass and band stop Filters using **HANNING** Window was written and response of the filter using **MATLAB** was executed.

Ex. No: 6

Date:

DESIGN OF IIR FILTERS

AIM:

To write a program to design the IIR Butterworth & Chebyshev Filter (LPF/HPF/BPF/BSF) by using MATLAB.

APPARATUS REQUIRED:

HARDWARE : Personal Computer

SOFTWARE : MATLAB R2014a

PROCEDURE:

1. Start the MATLAB program.
2. Open new M-file
3. Type the program
4. Save in current directory
5. Compile and Run the program
6. If any error occurs in the program correct the error and run it again
7. For the output see command window\ Figure window
8. Stop the program.

PROGRAM: (IIR Butterworth Filter)

PROGRAMS: IIR (BUTTERWORTH FILTER)

```
% Butterworth filter
% get the input values
rp=input('enter the passband ripple');
rs=input('enter the stopband ripple');
wp=input('enter the passband frequency');
ws=input('enter the stopband frequency');
fs=input('enter the sampling frequency');
w1=2*wp/fs;
w2=2*ws/fs;
%filter order
[n,wn]=buttord(w1,w2,rp,rs);
%lowpass filter
%either coefficient
[b,a]=butter(n,wn);
%frequency response
```

```
[h,w]=freqz(b,a,512);  
subplot(2,2,1);  
plot(w,abs(h));  
xlabel('normalized frequency');  
ylabel('abs(h)');  
title('lpf')
```

```
%high pass filter  
%filter coefficient  
[b,a]=butter(n,wn,'high');  
%frequency response  
[h,w]=freqz(b,a,512);  
subplot(2,2,2);  
plot(w,abs(h));  
xlabel('normalised frequency');  
ylabel('abs(h)');  
title('hpf')
```

```
%band pass filter  
%filter coefficient  
wn1=[w1 w2];  
[b,a]=butter(n,wn1);  
%frequency response  
[h,w]=freqz(b,a,512);  
subplot(2,2,3);  
plot(w,abs(h));  
xlabel('normalised frequency');  
ylabel('abs(h)');  
title('bpf')
```

```
%band pass filter  
%filter coefficient  
wn2=[w1 w2];  
[b,a]=butter(n,wn2,'stop');  
%frequency response  
[h,w]=freqz(b,a,512);  
subplot(2,2,4);  
plot(w,abs(h));  
xlabel('normalised frequency');  
ylabel('abs(h)');  
title('bsf')
```

IIR : (BUTTERWORTH FILTER)

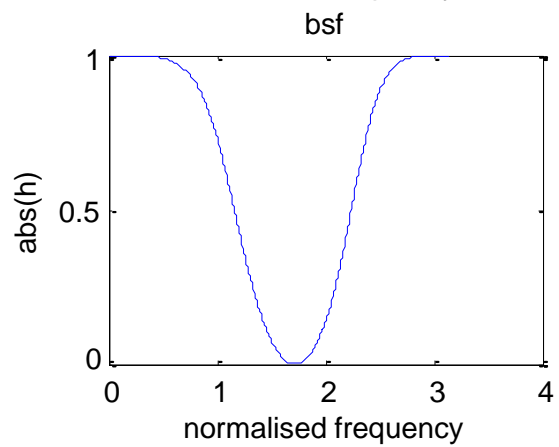
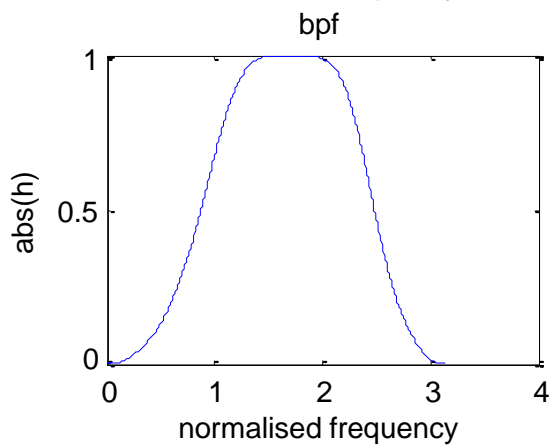
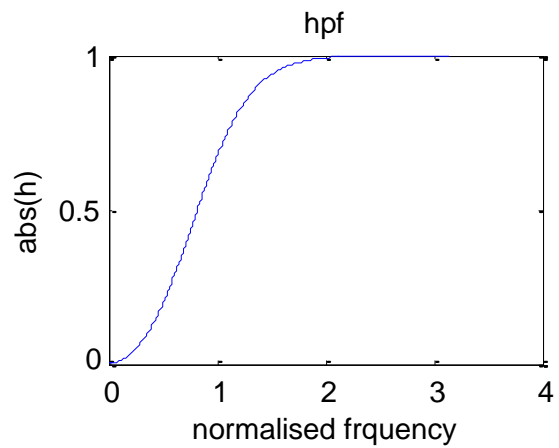
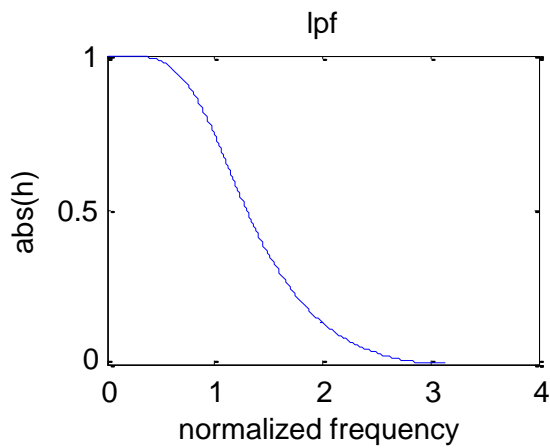
Enter the pass band ripple 6

Enter the stop band ripple 25

Enter the pass band frequency 1300

Enter the stop band frequency 3000

Enter the sampling frequency 8000



PROGRAMS: IIR (CHEBYSHEW FILTER)

```
% chebyshev filter  
% get the input values
```

```
rp=input('enter the passband ripple');  
rs=input('enter the stopband ripple');  
wp=input('enter the passband frequency');  
ws=input('enter the stopband frequency');  
fs=input('enter the sampling frequency');
```

```
w1=2*wp/fs;
```

```
w2=2*ws/fs;
```

```
%filter order
```

```
[n,wn]=cheb1ord(w1,w2,rp,rs);
```

```
%lowpass filter
```

```
%either coefficient
```

```
[b,a]=cheby1(n,rp,wn);
```

```
%frequency response
```

```
[H,w]=freqz(b,a,512);
```

```
subplot(2,2,1);
```

```
plot(w,abs(H));
```

```
xlabel('normalised frequency');
```

```
ylabel('abs(H)');
```

```
title('LPF')
```

```
%high pass filter
```

```
%filter coefficient
```

```
[b,a]=cheby1(n,rp,wn,'High');
```

```
%frequency response
```

```
[H,w]=freqz(b,a,512);
```

```
subplot(2,2,2);
```

```
plot(w,abs(H));
```

```
xlabel('normalised frequency');
```

```
ylabel('abs(H)');
```

```
title('HPF')
```

```
%band pass filter
```

```
%filter coefficient
```

```
wn1=[w1,w2];
```

```
[b,a]=cheby1(n,rp,wn1);
```

```
%frequency response
```

```
[H,w]=freqz(b,a,512);
```

```
subplot(2,2,3);
```

```
plot(w,abs(H));
```

```
xlabel('normalised frequency');
```

```
ylabel('abs(H)');
```

```
title('BPF')
```

```
%band stop filter
```

```
%filter coefficient
```

```
wn2=[w1, w2];
```

```
%frequency response
```

```
[b,a]=cheby1(n,rp,wn2,'stop');
```

```
[H,w]=freqz(b,a,512);
```

```
subplot(2,2,4);
```

```
plot(w,abs(H));  
xlabel('normalised frequency');  
ylabel('abs(H)');  
title('BSF')
```

IIR : (CHEBYSHEW FILTER)

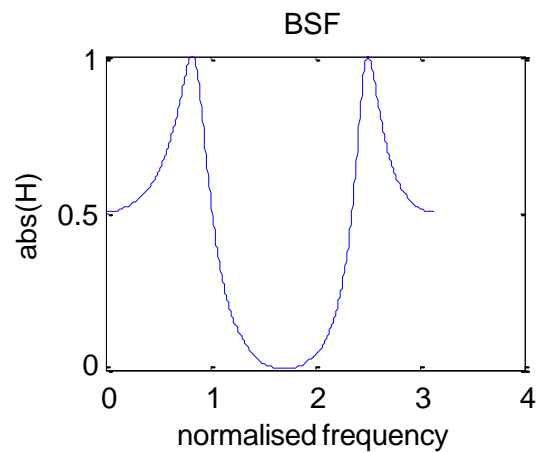
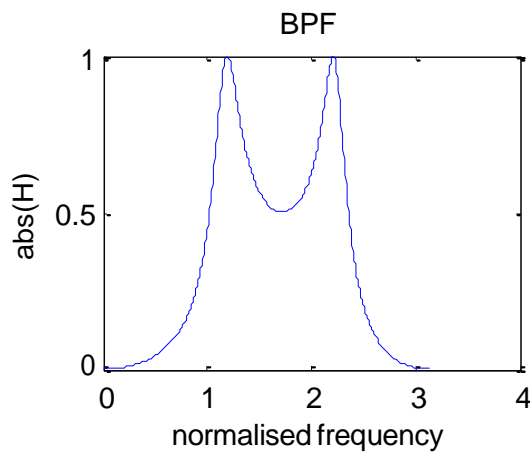
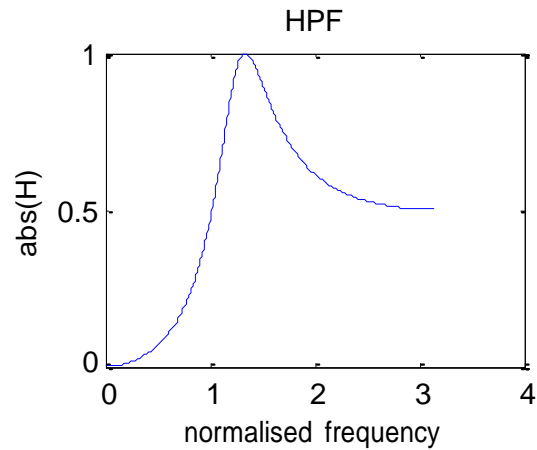
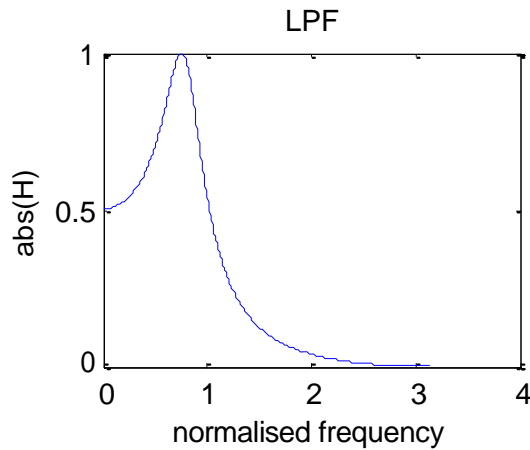
Enter the pass band ripple 6

Enter the stop band ripple 25

Enter the pass band frequency 1300

Enter the stop band frequency 3000

Enter the sampling frequency 8000



RESULT:

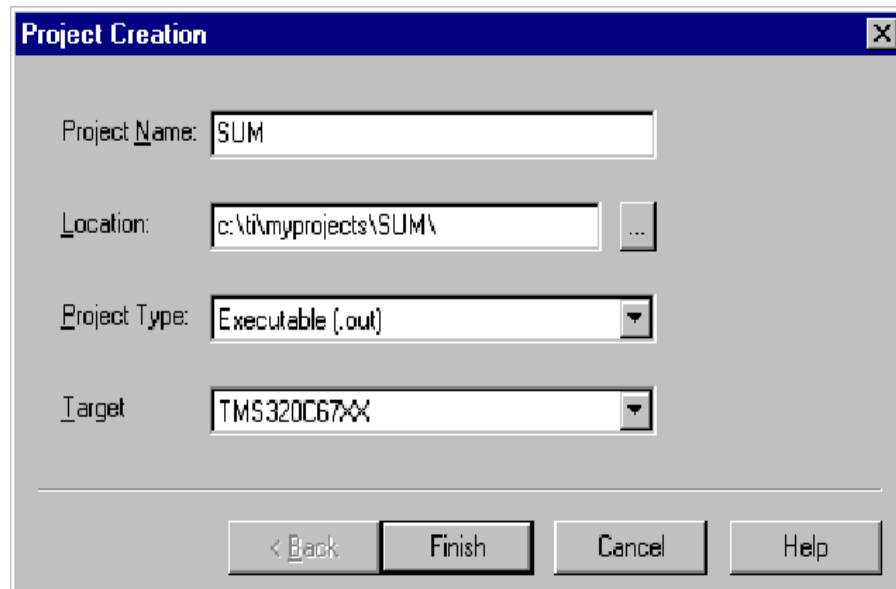
Thus the program to design IIR Butterworth & Chebyshev Filter (LPF/HPF/BPF/BSF) by using MATLAB was executed.

DSP PROCESSOR EXPERIMENTS

PROCEDURE TO WORK ON CODE COMPOSER STUDIO

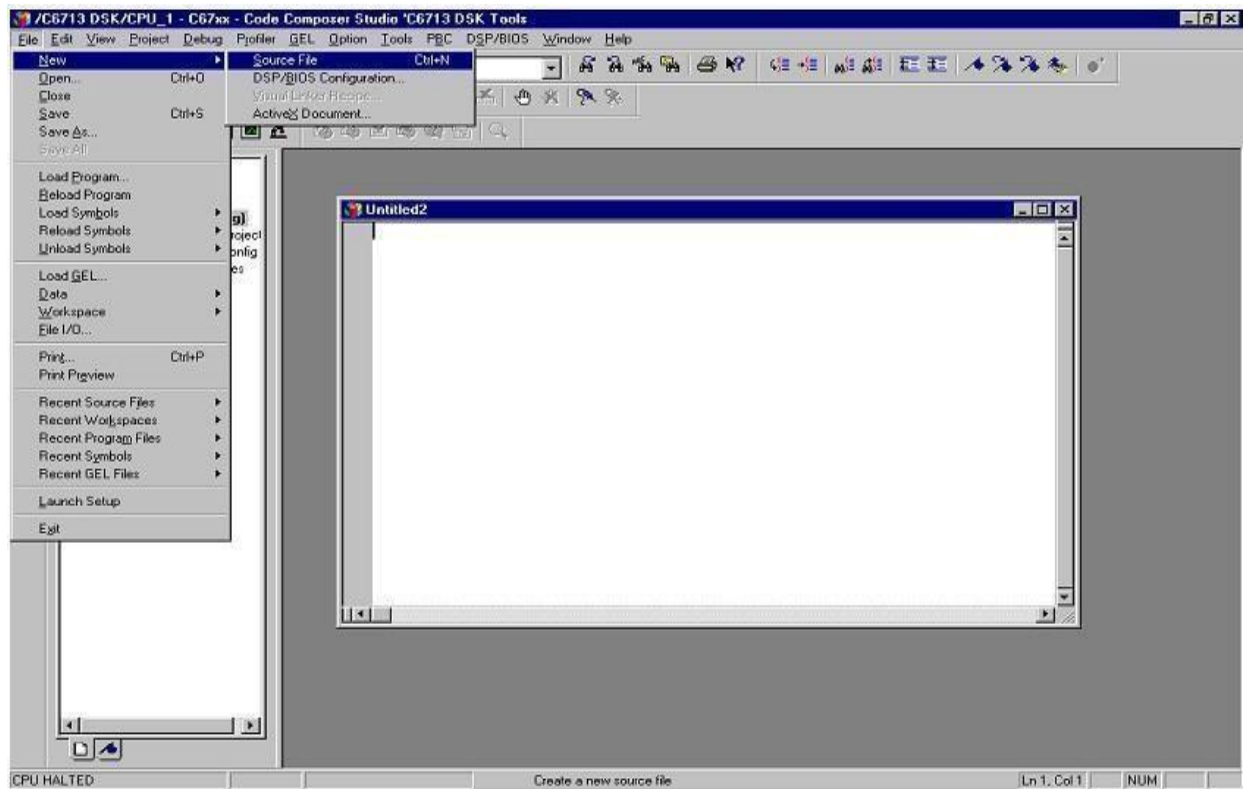
1. To create a New Project

Project → New (SUM.pjt)



2. To Create a Source file

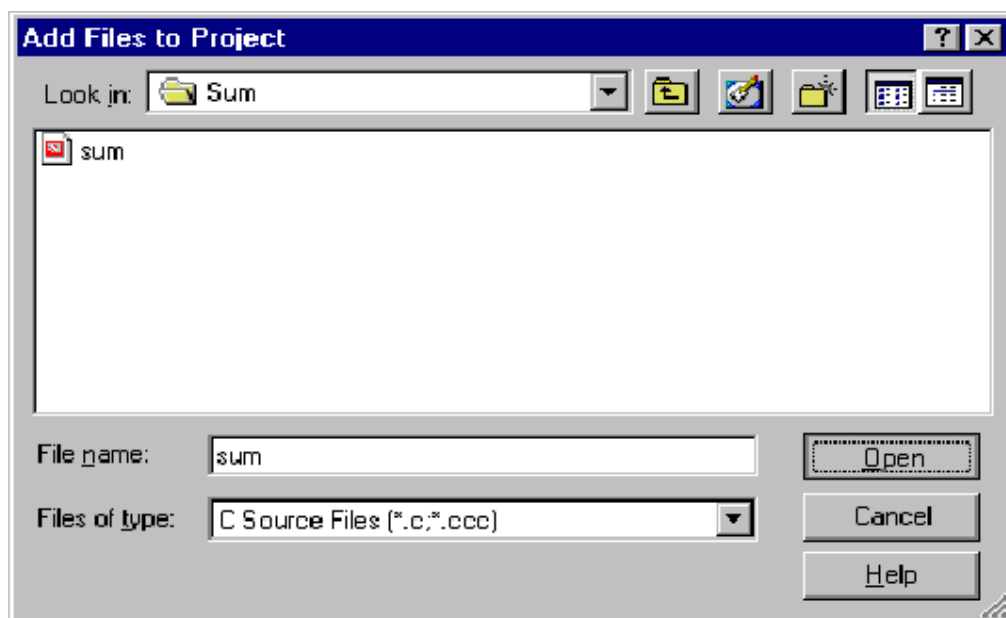
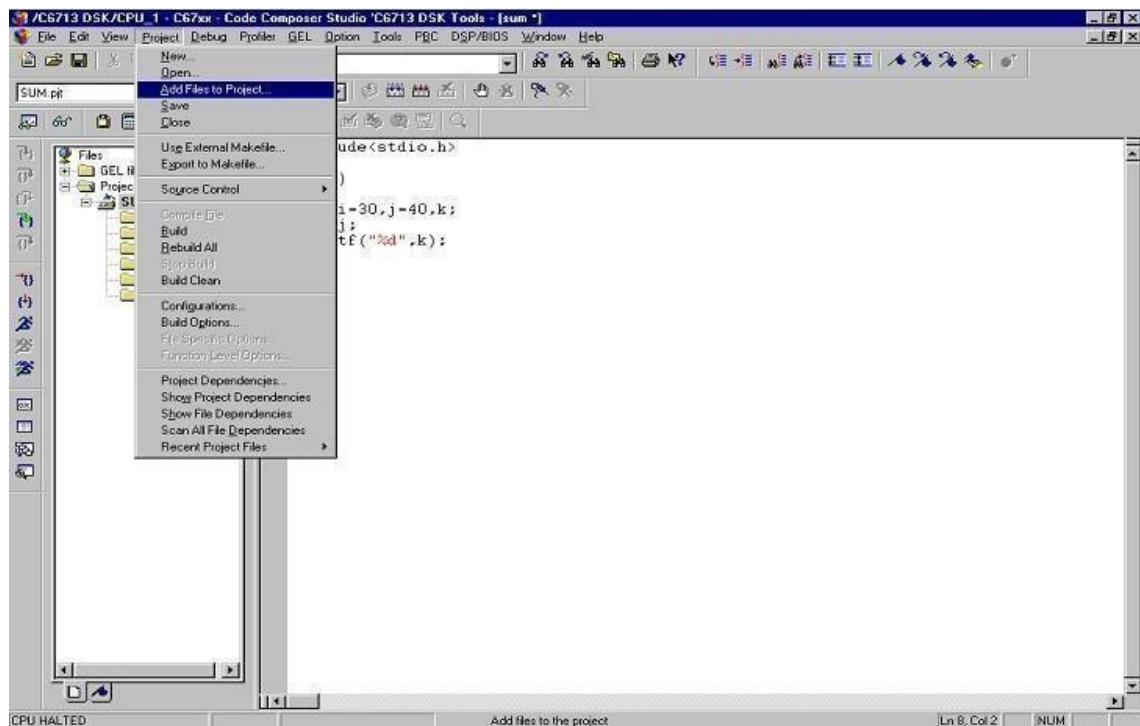
File → New



Type the code (Save & give a name to file, Eg: sum.c).

3. To Add Source files to Project

Project → Add files to Project → sum.c



4. To Add rts6700.lib file & hello.cmd:

Project → Add files to Project → rts6700.lib

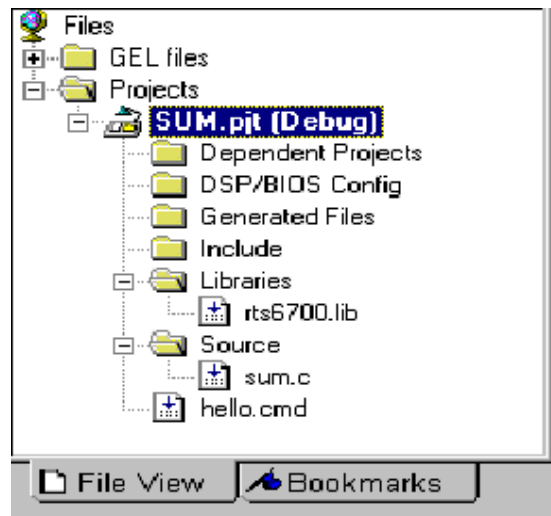
Path: c:\CCStudio\c6000\cgtools\lib\rts6700.lib

Note: Select Object & Library in (*.o;*.l) in Type of files

Project → Add files to Project → hello.cmd

Path: c:\ti\tutorial\dsk6713\hello1\hello.cmd

Note: Select Linker Command file (*.cmd) in Type of files



5. To Compile:

Project → Compile File

6. To build or Link:

Project → build,

Which will create the final executable (.out) file.(Eg. sum.out).

7. Procedure to Load and Run program:

Load program to DSK:

File → Load program → sum. Out

8. To execute project:

Debug → Run.

Ex. No: 7

Date:

STUDY OF ARCHITECTURE OF DIGITAL SIGNAL PROCESSOR

AIM:

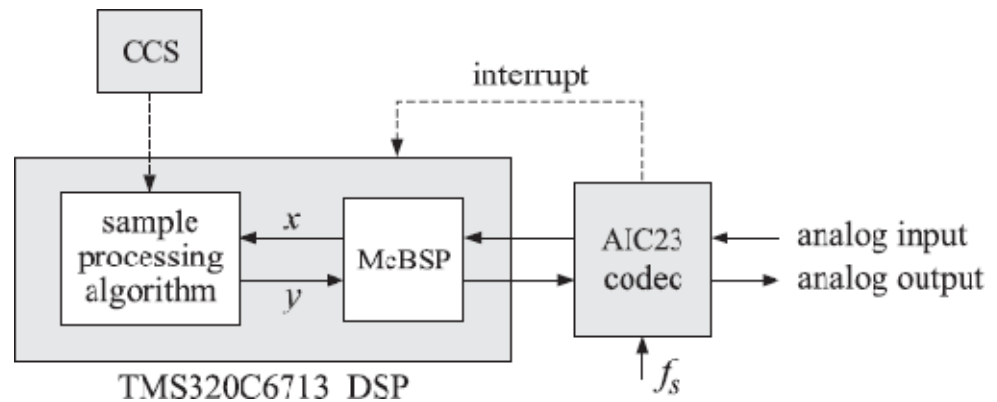
To study the Architecture of TMS320VC67XX DSP processor.

INTRODUCTION

The hardware experiments in the DSP lab are carried out on the Texas Instruments TMS320C6713 DSP Starter Kit (DSK), based on the TMS320C6713 floating point DSP running at 225MHz. The basic clock cycle instruction time is $1/(225 \text{ MHz}) = 4.44$ nanoseconds. During each clock cycle, up to eight instructions can be carried out in parallel, achieving up to $8 \times 225 = 1800$ million instructions per second (MIPS). The DSK board includes a 16MB SDRAM memory and a 512KB Flash ROM. It has an on-board 16-bit audio stereo codec (the Texas Instruments AIC23B) that serves both as an A/D and a D/A converter. There are four 3.5 mm audio jacks for microphone and stereo line input, and speaker and headphone outputs. The AIC23 codec can be programmed to sample audio inputs at the following sampling rates: $f_s = 8, 16, 24, 32, 44.1, 48, 96 \text{ kHz}$

The ADC part of the codec is implemented as a multi-bit third-order noise-shaping delta-sigma converter) that allows a variety of oversampling ratios that can realize the above choices of f_s . The corresponding oversampling decimation filters act as anti-aliasing pre-filters that limit the spectrum of the input analog signals effectively to the Nyquist interval $[-f_s/2, f_s/2]$. The DAC part is similarly implemented as a multi-bit second-order noise-shaping delta-sigma converter whose oversampling interpolation filters act as almost ideal reconstruction filters with the Nyquist interval as their pass band.

The DSK also has four user-programmable DIP switches and four LEDs that can be used to control and monitor programs running on the DSP. All features of the DSK are managed by the Code Composer Studio (CCS). The CCS is a complete integrated development environment (IDE) that includes an optimizing C/C++ compiler, assembler, linker, debugger, and program loader. The CCS communicates with the DSK via a USB connection to a PC. In addition to facilitating all programming aspects of the C6713 DSP, the CCS can also read signals stored on the DSP's memory, or the SDRAM, and plot them in the time or frequency domains. The following block diagram depicts the overall operations involved in all of the hardware experiments in the DSP lab. Processing is interrupt-driven at the sampling rate f_s , as explained below.

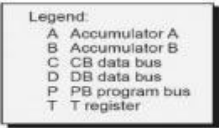


TMS320C6713 floating point DSP

The AIC23 codec is configured (through CCS) to operate at one of the above sampling rates f_s . Each collected sample is converted to a 16-bit two's complement integer (a **short** data type in C). The codec actually samples the audio input in stereo, that is, it collects two samples for the left and right channels

ARCHITECTURE

The 67XX DSPs use an advanced, modified Harvard architecture that maximizes processing power by maintaining one program memory bus and three data memory buses. These processors also provide an arithmetic logic unit (ALU) that has a high degree of parallelism, application-specific hardware logic, on-chip memory, and additional on-chip peripherals. These DSP families also provide a highly specialized instruction set, which is the basis of the operational flexibility and speed of these DSPs. Separate program and data spaces allow simultaneous access to program instructions and data, providing the high degree of parallelism. Two reads and one write operation can be performed in a single cycle. Instructions with parallel store and application-specific instructions can fully utilize this architecture. In addition, data can be transferred between data and program spaces. Such parallelism supports a powerful set of arithmetic, logic, and bit-manipulation operations that can all be performed in a single machine cycle. Also included are the control mechanisms to manage interrupts, repeated operations, and function calls.



a. Central Processing Unit (CPU)

The CPU of the 67XX devices contains:

- i. A 40-bit arithmetic logic unit (ALU)
- ii. Two 40-bit accumulators
- iii. A barrel shifter
- iv. A 17-bit multiplier/adder
- v. A compare, select, and store unit (CSSU)

b. Arithmetic Logic Unit (ALU)

The 67XX devices perform 2s-complement arithmetic using a 40-bit ALU and two 40-bit accumulators (ACCA and ACCB). The ALU also can perform Boolean operations. The ALU can function as two 16-bit ALUs and perform two 16-bit operations simultaneously when the C16 bit in status register 1 (ST1) is set.

c. Accumulators

The accumulators, ACCA and ACCB, store the output from the ALU or the multiplier / adder block; the accumulators can also provide a second input to the ALU or the multiplier / adder. The bits in each accumulator are grouped as follows:

- i. Guard bits (bits 32–39)
- ii. A high-order word (bits 16–31)
- iii. A low-order word (bits 0–15)

Instructions are provided for storing the guard bits, the high-order and the low-order accumulator words in data memory, and for manipulating 32-bit accumulator words in or out of data memory. Also, any of the accumulators can be used as temporary storage for the other.

d. Barrel Shifter

The 67XX-s barrel shifter has a 40-bit input connected to the accumulator or data memory (CB, DB) and a 40-bit output connected to the ALU or data memory (EB). The barrel shifter produces a left shift of 0 to 31 bits and a right shift of 0 to 16 bits on the input data. The shift requirements are defined in the shift-count field (ASM) of ST1 or defined in the temporary register (TREG), which is designated as a shift-count register. This shifter and the exponent detector normalize the values in an accumulator in a single cycle. The least significant bits (LSBs) of the output are filled with 0s and the most significant bits (MSBs) can be either zero-filled or sign-extended, depending on the state of the sign-extended mode bit (SXM) of ST1.

Additional shift capabilities enable the processor to perform numerical scaling, bit extraction, extended arithmetic, and overflow prevention operations

e. Multiplier/Adder

The multiplier / adder perform 17-bit 2s-complement multiplication with a 40-bit accumulation in a single instruction cycle. The multiplier / adder block consists of several elements: a multiplier, adder, signed/unsigned input control, fractional control, a zero detector, a rounder (2s-complement), overflow/saturation logic, and TREG. The multiplier has two inputs: one input is selected from the TREG, a data memory operand, or an accumulator; the other is selected from the program memory, the data memory, an accumulator, or an immediate value. The fast on-chip multiplier allows the C67XX to perform operations such as convolution, correlation, and filtering efficiently. In addition, the multiplier and ALU together execute multiply/accumulate (MAC) computations and ALU operations in parallel in a single instruction cycle. This function is used in determining the Euclid distance, and in implementing symmetrical and least mean square (LMS) filters, which are required for complex DSP algorithms.

f. Compare, Select, and Store Unit (CSSU)

The compare, select, and store unit (CSSU) performs maximum comparisons between the accumulator's high and low words, allows the test/control (TC) flag bit of status register 0 (ST0) and the transition (TRN) register to keep their transition histories, and selects the larger word in the accumulator to be stored in data memory. The CSSU also accelerates Viterbi-type butterfly computation with optimized on-chip hardware.

g. Program Control

Program control is provided by several hardware and software mechanisms:

The program controller decodes instructions, manages the pipeline, stores the status of operations, and decodes conditional operations. Some of the hardware elements included in the program controller are the program counter, the status and control register, the stack, and the address-generation logic.

Some of the software mechanisms used for program control includes branches, calls, and conditional instructions, repeat instruction, reset, and interrupt.

The C67XX supports both the use of hardware and software interrupts for program control. Interrupt service routines are vectored through a re-locatable interrupt vector table. Interrupts can be globally enabled / disabled and can be

individually masked through the interrupt mask register (IMR). Pending interrupts are indicated in the interrupt flag register (IFR). For detailed information on the structure of the interrupt vector table, the IMR and the IFR, see the device-specific data sheets.

h. Status Registers (ST0, ST1)

The status registers, ST0 and ST1, contain the status of the various conditions and modes for the -67XX devices. ST0 contains the flags (OV, C, and TC) produced by arithmetic operations and bit manipulations in addition to the data page pointer (DP) and the auxiliary register pointer (ARP) fields. ST1 contains the various modes and instructions that the processor operates on and executes.

i. Auxiliary Registers (AR0–AR7)

The eight 16-bit auxiliary registers (AR0–AR7) can be accessed by the central arithmetic logic unit (CALU) and modified by the auxiliary register arithmetic units (ARAUs). The primary function of the auxiliary registers is generating 16-bit addresses for data space. However, these registers also can act as general-purpose registers or counters.

j. Temporary Register (TREG)

The TREG is used to hold one of the multiplicands for multiply and multiply/accumulate instructions. It can hold a dynamic (execution-time programmable) shift count for instructions with a shift operation such as ADD, LD, and SUB. It also can hold a dynamic bit address for the BITT instruction. The EXP instruction stores the exponent value computed into the TREG, while the NORM instruction uses the TREG value to normalize the number. For ACS operation of Viterbi decoding, TREG holds branch metrics used by the DADST and DSADT instructions.

k. Transition Register (TRN)

The TRN is a 16-bit register that is used to hold the transition decision for the path to new metrics to perform the Viterbi algorithm. The CMPS (compare, select, max, and store) instruction updates the contents of the TRN based on the comparison between the accumulator high word and the accumulator low word.

l. Stack-Pointer Register (SP)

The SP is a 16-bit register that contains the address at the top of the system stack. The SP always points to the last element pushed onto the stack. The stack is manipulated by interrupts, traps, calls, returns, and the PUSHHD, PSHM, POPD, and POPM instructions. Pushes and pops of the stack pre decrement and post increment, respectively, all 16 bits of the SP.

m. Circular-Buffer-Size Register (BK)

The 16-bit BK is used by the ARAUs in circular addressing to specify the data block size.

n. Block-Repeat Registers (BRC, RSA, REA)

The block-repeat counter (BRC) is a 16-bit register used to specify the number of times a block of code is to be repeated when performing a block repeat. The block-repeat start address (RSA) is a 16-bit register containing the starting address of the block of program memory to be repeated when operating in the repeat mode. The 16-bit block-repeat end address (REA) contains the ending address if the block of program memory is to be repeated when operating in the repeat mode.

o. Interrupt Registers (IMR, IFR)

The interrupt-mask register (IMR) is used to mask off specific interrupts individually at required times. The interrupt-flag register (IFR) indicates the current status of the interrupts.

p. Processor-Mode Status Register (PMST)

The processor-mode status registers (PMST) controls memory configurations of the 67XX devices.

q. Power-Down Modes

There are three power-down modes, activated by the IDLE1, IDLE2, and IDLE3 instructions. In these modes, the 67XX devices enter a dormant state and dissipate considerably less power than in normal operation. The IDLE1 instruction is used to shut down the CPU. The IDLE2 instruction is used to shut down the CPU and on-chip peripherals. The IDLE3 instruction is used to shut down the 67XX processor completely. This instruction stops the PLL circuitry as well as the CPU and peripherals.

RESULT

Thus the study of architecture TMS320VC67XX and its functionalities has been identified.

Ex. No: 8

Date:

MAC OPERATION USING VARIOUS ADDRESSING MODES

AIM:

To Study the various addressing modes of TMS320C5416 XX DSP processor.

THEORY:

Addressing Modes The TMS320C67XX DSP supports three types of addressing modes that enable flexible access to data memory, to memory-mapped registers, to register bits, and to I/O space:

The absolute addressing mode allows you to reference a location by supplying all or part of an address as a constant in an instruction.

The direct addressing mode allows you to reference a location using an address offset.

The indirect addressing mode allows you to reference a location using a pointer.

Each addressing mode provides one or more types of operands. An instruction that supports an addressing-mode operand has one of the following syntax elements listed below.

Baddr

When an instruction contains Baddr, that instruction can access one or two bits in an accumulator (AC0–AC3), an auxiliary register (AR0–AR7), or a temporary register (T0–T3). Only the register bit test/set/clear/complement instructions support Baddr. As you write one of these instructions, replace Baddr with a compatible operand.

Cmem

When an instruction contains Cmem, that instruction can access a single word (16 bits) of data from data memory. As you write the instruction, replace Cmem with a compatible operand.

Lmem

When an instruction contains Lmem, that instruction can access a long word (32 bits) of data from data memory or from a memory-mapped registers. As you write the instruction, replace Lmem with a compatible operand.

Smem

When an instruction contains Smem, that instruction can access a single word (16 bits) of data from data memory, from I/O space, or from a memory-mapped register. As you write the instruction, replace Smem with a compatible operand.

Xmem and Ymem

When an instruction contains Xmem and Ymem, that instruction can perform two simultaneous 16-bit accesses to data memory. As you write the instruction, replace Xmem and Ymem with compatible operands.

Absolute Addressing Modes k16 absolute

This mode uses the 7-bit register called DPH (high part of the extended data page register) and a 16-bit unsigned constant to form a 23-bit data space address. This mode is used to access a memory location or a memory-mapped register.

k23 absolute

This mode enables you to specify a full address as a 23-bit unsigned constant. This mode is used to access a memory location or a memory-mapped register.

I/O absolute

This mode enables you to specify an I/O address as a 16-bit unsigned constant. This mode is used to access a location in I/O space.

Direct Addressing Modes DP direct

This mode uses the main data page specified by DPH (high part of the extended data page register) in conjunction with the data page register (DP). This mode is used to access a memory location or a memory-mapped register.

SP direct

This mode uses the main data page specified by SPH (high part of the extended stack pointers) in conjunction with the data stack pointer (SP). This mode is used to access stack values in data memory.

Register-bit direct

This mode uses an offset to specify a bit address. This mode is used to access one register bit or two adjacent register bits.

PDP direct

This mode uses the peripheral data page register (PDP) and an offset to specify an I/O address. This mode is used to access a location in I/O space. The DP direct and SP direct addressing modes are mutually exclusive. The mode selected depends on the CPL bit in status register ST1_67: 0 DP direct addressing mode 1 SP direct addressing mode The register-bit and PDP direct addressing modes are independent of the CPL bit.

Indirect Addressing Modes

You may use these modes for linear addressing or circular addressing.

AR indirect

This mode uses one of eight auxiliary registers (AR0–AR7) to point to data. The way the CPU uses the auxiliary register to generate an address depends on whether you are accessing data space (memory or memory-mapped registers), individual register bits, or I/O space.

Dual AR indirect

This mode uses the same address-generation process as the AR indirect addressing mode. This mode is used with instructions that access two or more data-memory locations.

CDP indirect

This mode uses the coefficient data pointer (CDP) to point to data. The way the CPU uses CDP to generate an address depends on whether you are accessing data space (memory or memory-mapped registers), individual register bits, or I/O space.

Coefficient indirect

This mode uses the same address-generation process as the CDP indirect addressing mode. This mode is available to support instructions that can access a coefficient in data memory at the same time they access two other data-memory values using the dual AR indirect addressing mode.

Circular Addressing

Circular addressing can be used with any of the indirect addressing modes. Each of the eight auxiliary registers (AR0–AR7) and the coefficient data pointer (CDP) can be independently configured to be linearly or circularly modified as they act as pointers to data or to register bits, see Table 3–10. This configuration is done with a bit (ARnLC) in status register ST2_67. To choose circular modification, set the bit. Each auxiliary register ARn has its own linear/circular configuration bit in ST2_67: 0 Linear addressing 1 Circular addressing The CDPLC bit in status register ST2_67 configures the DSP to use CDP for linear addressing or circular addressing: 0 Linear addressing 1 Circular addressing You can use the circular addressing instruction qualifier, .CR, if you want every pointer used by the instruction to be modified circularly, just add .CR to the end of the instruction mnemonic (for example, ADD.CR). The circular addressing instruction qualifier overrides the linear/circular configuration in ST2_67.

ADDITION:

```
INP1 .SET 0H
INP2 .SET 1H
OUT .SET 2H
    .mmregs
    .text
START:
    LD #140H,DP
    RSBX CPL
    NOP
    NOP
    NOP
    NOP
    LD INP1,A
    ADD INP2,A
    STL A,OUT
HLT: B HLT
```

INPUT:

Data Memory:
A000h 0004h
A001h 0004h

OUTPUT:

Data Memory:
A002h 0008h

SUBTRACTION:

```
INP1 .SET 0H
INP2 .SET 1H
OUT .SET 2H
    .mmregs
    .text
START:
    LD #140H,DP
    RSBX CPL
    NOP
    NOP
    NOP
    NOP
    LD INP1,A
    SUB INP2,A
    STL A,OUT
HLT: B HLT
```

INPUT:

Data Memory:
A000h 0004h
A001h 0002h

OUTPUT:

Data Memory:
A002h 0002h

MULTIPLICATION

```
.mmregs
.text
START:
    STM    #0140H,ST0
    STM    #40H,PMST
    STM    #0A000H,AR0
    ST     #1H,*AR0
    LD     *AR0+,T
    ST     #2H,*AR0
    MPY    *AR0+,A
    STL    A,*AR0
HLT:  B    HLT
    .END
```

OUTPUT

A002H 2H

DIVISION

```
DIVID    .SET  0H
DIVIS     .SET  1H
OUT       .SET  2H
    .mmregs
    .text
START:
    STM    #140H,ST0
    RSBX   CPL
    RSBX   FRCT
    NOP
    NOP
    NOP
    NOP
    LD     DIVID,A      ;dividend to acc
    RPT    #0FH
    SUBC   DIVIS,A      ;A / DIVIS -> A
    STL    A,OUT        ;result in 9002h
HLT:  B    HLT
    .END
```

INPUT

DATA MEMORY

A000H	000AH
A001H	0002H

OUTPUT

A002H	0005H
-------	-------

RESULT:

Thus, the various addressing mode of DSP processor TMS320C5416XX was studied

Ex. No: 9

Date:

WAVEFORM GENERATION

AIM:

To generate a sine wave ,square wave ,Triangular wave and Saw tooth wave using TMS320C5416XX DSP KIT.

APPARATUS REQUIRED:

HARDWARE : Personal Computer & TMS320C67XX kit

SOFTWARE : Vi Debugger

PROCEDURE:

1. Open Code Composer Studio v4.
2. To create the New Project
Project→ New (File Name. pjt, Eg: vvits.pjt)
3. To create a Source file
File →New→ Type the code (Save & give file name, Eg: sum.asm).
4. To Add Source files to Project
Project→ Add files to Project
sum.asm

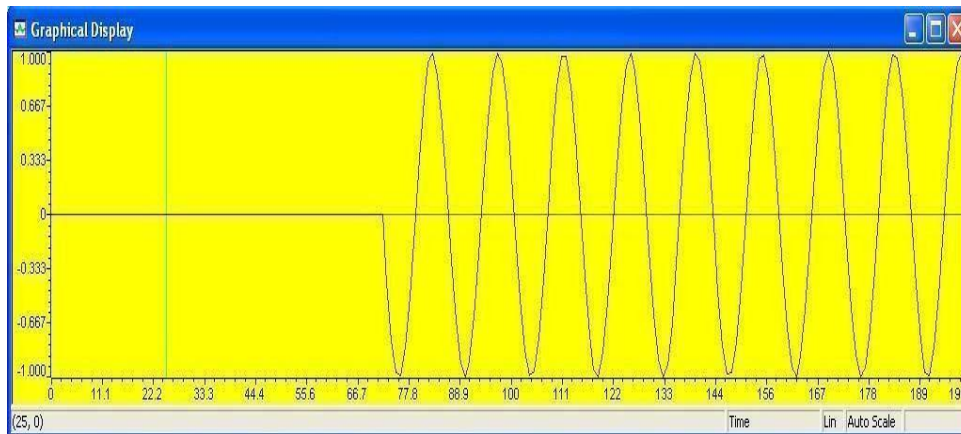
COMPILE:

1. To Compile: Project→ Compile
2. To Rebuild: project → rebuild,
Which will create the final .out executable file. (Eg. vvit.out).
3. Procedure to Load and Run program:
Load the Program to DSK: File→ Load program
→vvit.out To Execute project: Debug → Run

PROGRAM: (Sine waveform)

```
mmreg
.text
START:
    STM    #140H,ST0
    RSBX   CPL
    NOP
    NOP
    NOP
    NOP
REP:
    LD     #TABLE,A
    STM    #372,AR1
LOOP:
    READA DATA
    PORTW DATA,04H
    ADD    #1H,A
    B      REP
    }
}
```

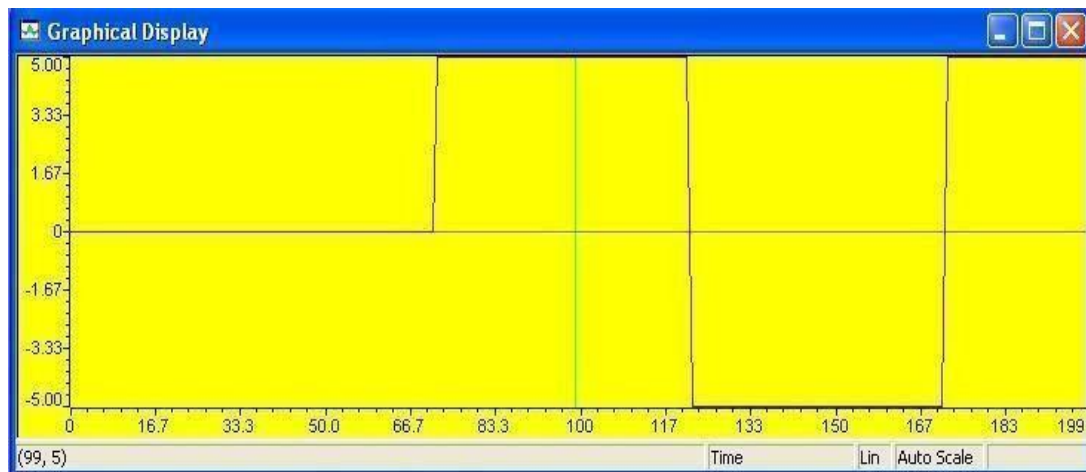
OUTPUT: (Sine waveform)



PROGRAM: (Square waveform)

```
DATA      .SET  0H
          .mmregs
          .text
START:
    STM    #140H,ST0
    RSBX   CPL      ;    NOP
    NOP
    NOP
    NOP
REP:
    ST     #0H,DATA
    CALL   DELAY
    ST     #0FFFH,DATA
    CALL   DELAY
    B      REP
DELAY:
    STM    #0FFFH,AR1
DEL1:
    PORTW  DATA,04H
    BANZ   DEL1,*AR1-
    RET
```

Output



TRIANGULAR WAVE GENERATION

```
DATA      .SET  0H
          .mmregs
          .text
START:
    STM    #140H,ST0
    RSBX   CPL
    NOP
    NOP
    NOP
    NOP
REP:
    ST     #0H,DATA
INC:
    LD     DATA,A
    ADD    #1H,A
    STL    A,DATA
    PORTW  DATA,04H
    CMPM   DATA,#0FFFH
    BC     INC,NTC
DEC:
    LD     DATA,A
    SUB    #1H,A
    STL    A,DATA
    PORTW  DATA,04H
    CMPM   DATA,#0H
    BC     DEC,NTC
    B      REP
```

SAWTOOTH WAVE GENERATION

```
DATA      .SET  0H
          .mmregs
          .text
START:
    STM    #140H,ST0
    RSBX   CPL
    NOP
    NOP
    NOP
    NOP
REP:
    ST     #0H,DATA
INC:
    LD     DATA,A
    ADD    #1H,A
    STL    A,DATA
    PORTW  DATA,04H
    CMPM   DATA,#0FFFH
    BC     INC,NTC
    B      REP
```

RESULT:

Thus, the sine wave ,square ,triangular and saw tooth waveform was generated displayed at graph.

Ex. No: 10

Date:

DESIGN OF FIR FILTERS

AIM:

To write a ASM program for the design of FIR Filter, also plots the magnitude responses for the same.

APPARATUS REQUIRED:

HARDWARE : Personal Computer & TMS320C67XX kit

SOFTWARE : Code Composer Studio version4

PROCEDURE:

1. Open Code Composer Studio v4.
2. To create the New Project
Project→ New (File Name.)
3. To create a Source file
File →New→ Type the code (Save & give file name, Eg: sum.asm).
4. To Add Source files to Project
Project→ Add files to
Projectsum.asm

COMPILE:

1. To Compile: Project→ Compile
2. To Rebuild: project → rebuild,
Which will create the final .out executable file. (Eg. vvit.out).
3. Procedure to Load and Run program:
Load the Program to DSK: File→ Load program
→vvit.out To Execute project: Debug → Run

FIR-LOW-PASS FILTER

Filter type : FIR-LPF
Window type : Rectangular window
Sampling frequency : 41khz
Cut-off frequency : 4khz
No. of taps : 52

B3 .SET 0F000H
B2 .SET 0F00H
B1 .SET 00F0H
B0 .SET 000FH
DATA .SET 50H
TXD .SET 51H

.mmregs

.text

START:

STM #01h,ST0
RSBX CPL
RSBX FRCT
NOP
NOP
STM #150H,AR1
LD #0H,A
RPT #34H
STL A,*AR1+

REPFIRL:

STM #0A200H,AR4
STM #359,AR5

LOOP:

PORTR 06,0

CHK_BUSY:

PORTR 07,0
BITF 0,#20H
BC CHK_BUSY,TC
PORTR 04,0
LD 0,A
AND #0FFFH,A
XOR #0800H,A
SUB #800H,A
STM #150H,AR1
STL A,*AR1
STM #183H,AR2
LD #0H,A
RPT #33H
MACD *AR2-,TABLE,A
STH A,1,0H
LD 0H,A

```

    ADD    #800H,A
    STL    A,1H
    PORTW 1H,04H
    STL    A,*AR4+
    BANZ   LOOP,*AR5-
    STM    #0A200H,AR2
    STM    #359,AR3
REPSER:
    STM    #140H,ST0
    RSBX   CPL
    NOP
    NOP
    NOP
    LD     *AR2+,A
    SUB    #7FFH,A
    STL    A,DATA
    CALL   SERIAL
    BANZ   REPSER,*AR3-
    STM    #01h,ST0
    RSBX   CPL
    RSBX   FRCT
    NOP
    NOP
    B      REPFIRL
SERIAL:
    STM    #140H,ST0
    RSBX   CPL
    NOP
    NOP
    NOP
    NOP
    LD     #25H,A
    CALL   TXDATA
    STM    #140H,ST0
    RSBX   CPL
    NOP
    NOP
    NOP
    NOP
    LD     DATA,A
    AND    #B3,A      ;1st digit (from msb)
    SFTL   A,-12
    CALL   HEXASC
    CALL   TXDATA
    STM    #140H,ST0
    RSBX   CPL
    NOP
    NOP
    NOP

```

```

NOP
LD DATA,A
AND #B2,A ;1st digit (from msb)
SFTL A,-8
CALL HEXASC
CALL TXDATA
STM #140H,ST0
RSBX CPL
NOP
NOP
NOP
NOP
LD DATA,A
AND #B1,A ;1st digit (from msb)
SFTL A,-4
CALL HEXASC
CALL TXDATA
STM #140H,ST0
RSBX CPL
NOP
NOP
NOP
NOP
LD DATA,A
AND #B0,A ;1st digit (from msb)
CALL HEXASC
CALL TXDATA
STM #140H,ST0
RSBX CPL
NOP
NOP
NOP
NOP
LD #24H,A
CALL TXDATA
STM #140H,ST0
RSBX CPL
NOP
NOP
NOP
NOP
RET
HEXASC:
ADD #30H,A
LD A,B
SUB #3AH,B
BC LESS9,BLT
ADD #7H,A
LESS9:
RET

```


TXDATA:

CALL 8C69H ;8C38H for 5416 mode 1

SSBX INTM

rpt #2ffh ;delay

nop

RET

fs = 41khz ; fc = 4khz ; N = 52

TABLE:

.word 01FH

.word 010EH

.word 01ABH

.word 01B4H

.word 0117H

.word 0H

.word 0FECDH

.word 0FDEEH

.word 0FDC2H

.word 0FE6EH

.word 0FFCDH

.word 016FH

.word 02C0H

.word 0333H

.word 0274H

.word 097H

.word 0FE19H

.word 0FBCBH

.word 0FA9BH

.word 0FB53H

.word 0FE50H

.word 0362H

.word 09C5H

.word 01048H

.word 01599H

.word 01895H

.word 01895H

.word 01599H

.word 01048H

.word 09C5H

.word 0362H

.word 0FE50H

.word 0FB53H

.word 0FA9BH

.word 0FBCBH

.word 0FE19H

.word 097H

.word 0274H

.word 0333H

.word 02C0H

.word 016FH

.word 0FFCDH

```

.word 0FE6EH
.word 0FDC2H
.word 0FDEEH
.word 0FECDH
.word 0H
.word 0117H
.word 01B4H
.word 01ABH
.word 010EH
.word 01FH

```

FIR-HIGH PASS FIR FILTER

```

Sampling freq      : 43khz
Cut-off freq       : 2khz
N                  : 52
Filter type        : High pass filter
Window type        : Rectangular

```

Program Description:

1. Make all the x(n) zero initially
2. Read the data from the adc.
3. Store the adc data in x(0)
4. Make the pointer to point the x(n_end)
5. Perform the convolution of x(n) and the coefficients h(n) using MACD instruction.
6. Send the convolution output to the dac
7. Repeat from step 2.

```
.mmregs
```

```
.text
```

START:

```

STM  #01h,ST0      ;initialize the data page pointer
RSBX  CPL          ;Make the processor to work using DP
RSBX  FRCT         ;reset the fractional mode bit
NOP
NOP

```

*****loop to make all x(n) zero initially*****

```

STM  #150H,AR1     ;initialize ar1 to point to x(n)
LD   #0H,A         ;make acc zero
RPT  #34H
STL  A,*AR1+       ;make all x(n) zero

```

*****to read the adc data and store it in x(0)*****

LOOP:

```
PORTR 06,0          ;start of conversion
```

CHK_BUSY:

```

;PORTR 07,0          ;check for busy
;BITF 0,#20H
;BC    CHK_BUSY,TC
PORTR 04,0          ;read the adc data

```

```

LD    0,A
AND   #0FFFH,A    ;AND adc data with 0fffh for 12 bit adc
XOR   #0800H,A    ;recorrect the 2's complement adc data
SUB   #800H,A      ;remove the dc shift
STM   #150H,AR1    ;initialize ar1 with x(0)
STL   A,*AR1       ;store adc data in x(0)
STM   #183H,AR2    ;initialize ar2 with x(n_end)
*****start of convolution*****
LD    #0H,A        ;sum is 0 initially
RPT   #33H
MACD  *AR2-,TABLE,A ;convolution process
STH   A,1,0H
LD    0H,A
ADD   #800H,A      ;add the dc shift to the convolution output
STL   A,1H
PORTW 1H,04H       ;send the output to the dac
B     LOOP

```

TABLE:

```

.word 0FCEFH
.word 62H
.word 0FD50H
.word 14AH
.word 0FE1BH
.word 28FH
.word 0FF11H
.word 3E5H
.word 0FFD1H
.word 4ECH
.word 0FFF5H
.word 54FH
.word 0FF28H
.word 4DAH
.word 0FD38H
.word 398H
.word 0FA2EH
.word 1DDH
.word 0F627H
.word 55H
.word 0F131H
.word 4BH
.word 0EA6DH
.word 568H
.word 0D950H
.word 459EH
.word 459EH
.word 0D950H
.word 568H
.word 0EA6DH
.word 4BH
.word 0F131H

```

```

.word 55H
.word 0F627H
.word 1DDH
.word 0FA2EH
.word 398H
.word 0FD38H
.word 4DAH
.word 0FF28H
.word 54FH
.word 0FFF5H
.word 4ECH
.word 0FFD1H
.word 3E5H
.word 0FF11H
.word 28FH
.word 0FE1BH
.word 14AH
.word 0FD50H
.word 62H
.word 0FCEFH

```

FIR-BAND PASS FIR FILTER

```

Sampling freq      : 43khz
Cut-off freq1     : 2khz
Cut-off freq2:    4khz
N                  52
Filter type        : Band pass filter
Window type        : Rectangular

```

Program Description:

1. Make all the x(n) zero initially
2. Read the data from the adc.
3. Store the adc data in x(0)
4. Make the pointer to point the x(n_end)
5. Perform the convolution of x(n) and the coefficients h(n) using MACD instruction.
6. Send the convolution output to the dac
7. Repeat from step 2.

```

.mmregs
.text

```

START:

```

STM    #01h,ST0    ;initialize the data page pointer
RSBX   CPL         ;Make the processor to work using DP
RSBX   FRCT        ;reset the fractional mode bit

```

```

NOP
NOP
*****loop to make all x(n) zero initially*****
STM  #150H,AR1    ;initialize ar1 to point to x(n)
LD   #0H,A        ;make acc zero
RPT  #34H
STL  A,*AR1+      ;make all x(n) zero
*****to read the adc data and store it in x(0)*****
LOOP:
PORTR 06,0        ;start of conversion
CHK_BUSY:
PORTR 07,0        ;check for busy
BITF 0,#20H
BC   CHK_BUSY,TC
PORTR 04,0        ;read the adc data
LD   0,A
AND  #0FFFH,A     ;AND adc data with 0fffh for 12 bit adc
XOR  #0800H,A     ;recorrect the 2's complement adc data
SUB  #800H,A      ;remove the dc shift
STM  #150H,AR1    ;initialize ar1 with x(0)
STL  A,*AR1       ;store adc data in x(0)
STM  #183H,AR2    ;initialize ar2 with x(n_end)
;*****start of convolution*****
LD   #0H,A        ;sum is 0 initially
RPT  #33H
MACD *AR2-,TABLE,A ;convolution process
STH  A,1,0H
LD   0H,A
ADD  #800H,A      ;add the dc shift to the convolution output
STL  A,1H
PORTW 1H,04H      ;send the output to the dac
B    LOOP
TABLE:
.word 208H
.word 257H
.word 218H
.word 143H
.word 0H
.word 0FE9EH
.word 0FD7AH
.word 0FCE7H
.word 0FD08H
.word 0FDD1H
.word 0FEECH
.word 0FFE4H
.word 3DH
.word 0FFA1H
.word 0FDFCH
.word 0FB8FH
.word 0F8ECH

```

.word 0F6D4H
.word 0F608H
.word 0F713H
.word 0FA21H
.word 0FEE6H
.word 4A7H
.word 0A60H
.word 0EF8H
.word 1187H
.word 1187H
.word 0EF8H
.word 0A60H
.word 4A7H
.word 0FEE6H
.word 0FA21H
.word 0F713H
.word 0F608H
.word 0F6D4H
.word 0F8ECH
.word 0FB8FH
.word 0FDFCH
.word 0FFA1H
.word 3DH
.word 0FFE4H
.word 0FEECH
.word 0FDD1H
.word 0FD08H
.word 0FCE7H
.word 0FD7AH
.word 0FE9EH
.word 0H
.word 143H
.word 218H
.word 257H
.word 208H

FIR- BAND REJECT FIR FILTER

Sampling freq : 43khz
Cut-off freq1 : 2khz
Cut-off freq2: 4khz
N 52
Filter type : Band reject filter
Window type : Rectangular

Program Description:

1. Make all the x(n) zero initially
2. Read the data from the adc.

3. Store the adc data in x(0)
4. Make the pointer to point the x(n_end)
5. Perform the convolution of x(n) and the coefficients h(n) using MACD instruction.
6. Send the convolution output to the dac
7. Repeat from step 2.

```
.mmregs
.text
START:
    STM    #01h,ST0    ;initialize the data page pointer
    RSBX   CPL         ;Make the processor to work using DP
    RSBX   FRCT        ;reset the fractional mode bit
    NOP
    NOP
;*****loop to make all x(n) zero initially*****
    STM    #150H,AR1    ;initialize ar1 to point to x(n)
    LD     #0H,A        ;make acc zero
    RPT    #34H
    STL    A,*AR1+      ;make all x(n) zero
;*****to read the adc data and store it in x(0)*****
LOOP:
    PORTR  06,0        ;start of conversion
CHK_BUSY:
    PORTR  07,0        ;check for busy
    BITF   0,#20H
    BC     CHK_BUSY,TC
    PORTR  04,0        ;read the adc data
    LD     0,A
    AND    #0FFFH,A     ;AND adc data with 0fffh for 12 bit adc
    XOR    #0800H,A     ;recorrect the 2's complement adc data
    SUB    #800H,A      ;remove the dc shift
    STM    #150H,AR1    ;initialize ar1 with x(0)
    STL    A,*AR1      ;store adc data in x(0)
    STM    #183H,AR2    ;initialize ar2 with x(n_end)
;*****start of convolution*****
    LD     #0H,A        ;sum is 0 initially
    RPT    #33H
    MACD   *AR2-,TABLE,A ;convolution process
    STH    A,1,0H
    LD     0H,A
    ADD    #800H,A      ;add the dc shift to the convolution output
    STL    A,1H
    PORTW  1H,04H      ;send the output to the dac
    B      LOOP

TABLE:
    .word 0FEB9H
    .word 14EH
```

.word 0FDA1H
.word 155H
.word 0FE1BH
.word 282H
.word 0FEAFH
.word 2ACH
.word 0FD35H
.word 8DH
.word 0F9D9H
.word 0FE07H
.word 0F7CCH
.word 0FEE2H
.word 0FA2FH
.word 4BAH
.word 1AH
.word 25CH
.word 420H
.word 1008H
.word 89H
.word 0D61H
.word 0F3F2H
.word 0AF9H
.word 0DB7EH
.word 045DFH
.word 045DFH
.word 0DB7EH
.word 0AF9H
.word 0F3F2H
.word 0D61H
.word 89H
.word 1008H
.word 420H
.word 25CH
.word 1AH
.word 4BAH
.word 0FA2FH
.word 0FEE2H
.word 0F7CCH
.word 0FE07H
.word 0F9D9H
.word 8DH
.word 0FD35H
.word 2ACH
.word 0FEAFH
.word 282H
.word 0FE1BH
.word 155H
.word 0FDA1H
.word 14EH
.word 0FEB9H

RESULT:

Thus the asm program for the design of FIR filter was plotted successfully.

Ex. No: 11

Date:

DESIGN OF IIR FILTER

AIM:

To write a ASM program for the design of IIR Filter, also plots the magnitude responses for the same.

APPARATUS REQUIRED:

HARDWARE : Personal Computer & TMS320C67XX

PROCEDURE:

1. Open Code Composer Studio v4.
2. To create the New Project
Project→ New (File Name. pjt, Eg: vvits.pjt)
3. To create a Source file
File →New→ Type the code (Save & give file name, Eg: sum.c).
4. To Add Source files to Project
Project→ Add files to
Project→sum.c
5. To Add rts.lib file & Hello.cmd:
Project→ Add files to Project→ rts6700.lib
Library files: rts6700.lib (Path: c:\ti\c6000\cgtools\lib\
rts6700.lib) Note: Select Object& Library in (*.o,*.l) in Type of
files
6. Project→ Add files to Project →hello.cmd
CMD file - Which is common for all non real time
programs. (Path: c:\ti \
tutorial\dsk6713\hello1\hello.cmd)
Note: Select Linker Command file (*.cmd) in Type of files

COMPILE:

1. To Compile: Project→ Compile
2. To Rebuild: project → rebuild,
Which will create the final .out executable file. (Eg. vvit.out).
3. Procedure to Load and Run program:
Load the Program to DSK: File→ Load program
→vvit. out To Execute project: Debug → Run

IIR-LOWPASS FILTER

Filter type : Low pass filter
Filter order 2
Filter design type : Butterworth
Pass band attenuation : 3db
First corner freq : 0.2
Second corner freq : 0.24
Sampling freq : 50Khz
Cut-off freq : 10Khz
FROM PCDSP COEFFICIENTS

XN .SET 0H
XNM1 .SET 1H
XNM2 .SET 2H
YN .SET 3H
YNM1 .SET 4H
YNM2 .SET 5H
XN1 .SET 6H
XN1M1 .SET 7H
XN1M2 .SET 8H
YN1 .SET 9H
YN1M1 .SET 0AH
YN1M2 .SET 0BH
TEMP .SET 0CH
A10 .SET 0100H
A11 .SET 0FFA2H
A12 .SET 0032H
B10 .SET 0100H
B11 .SET 0200H
B12 .SET 0100H

.mmregs

.text

START:

STM #40H,PMST
RSBX CPL
STM #01H,ST0
RSBX FRCT

```
NOP
NOP
NOP
;initialize xn,x(n-1),x(n-2),yn,y(n-1),y(n-2)
ST    #0H,XN
ST    #0H,XNM1
ST    #0H,XNM2
ST    #0H,YN
ST    #0H,YNM1
```

```

ST    #0H,YNM2
ST    #0H,XN1
ST    #0H,XN1M1
ST    #0H,XN1M2
ST    #0H,YN1
ST    #0H,YN1M1
ST    #0H,YN1M2

```

REPEAT:

;to read data from ADC

```
PORTR 06,20          ;start of conversion
```

```
CHK_BUSY:           ;check status
```

```
; PORTR 07,20
```

```
; BITF 20,#20H
```

```
; BC   CHK_BUSY,TC
```

```
PORTR 04,20          ;read ADC data
```

```
LD    20,A
```

```
AND   #0FFFH,A
```

```
XOR   #0800H,A        ;to correct 2's complement
```

```
SUB   #800H,A
```

```
STL   A,XN            ;xn
```

```
STL   A,TEMP
```

```
LD    #0H,B           ;sum = B = 0
```

```
LD    #B10,A          ;b0 = T
```

```
STLM  A,T
```

```
MPY   XN,A            ;b0*xn = A
```

```
SFTL  A,-8
```

```
ADD   A,B             ;b0*xn =B
```

```
LD    #B11,A          ;b0 = T
```

```
STLM  A,T
```

```
MPY   XNM1,A          ;b0*xn = A
```

```
SFTL  A,-8
```

```
ADD   A,B             ;b0*xn =B
```

```
LD    #B12,A          ;b0 = T
```

```
STLM  A,T
```

```
MPY   XNM2,A          ;b0*xn = A
```

```
SFTL  A,-8
```

```
ADD   A,B             ;b0*xn =B
```

```
LD    #A11,A          ;b0 = T
```

```
STLM  A,T
```

```
MPY   YNM1,A          ;b0*xn = A
```

```
SFTL  A,-8
```

```
SUB   A,B             ;b0*xn =B
```

```
LD    #A12,A          ;b0 = T
```

```
STLM  A,T
```

```
MPY   YNM2,A          ;b0*xn = A
```

```
SFTL  A,-8
```

```
SUB   A,B             ;b0*xn =B
```

```
STL   B,YN
```

```
STL   B,XN1
```

```

LD    YNM1,A
STL   A,YNM2
LD    YN,A
STL   A,YNM1
LD    XNM1,A
STL   A,XNM2
LD    XN,A
STL   A,XNM1
LD    YN,A
ADD   #800H,A
STL   A,YN
PORTW YN,04H
B      REPEAT

```

HIGH PASS FILTER

```

Filter type      : High pass filter
Filter order     2
Filter design type : Butterworth
Pass band attenuation : 3db
First corner freq  : 0.2
Second corner freq : 0.24
Sampling freq     : 50Khz
Cut-off freq      : 10Khz

```

FROM PCDSP COEFFICIENTS

```

XN      .SET  0H
XNM1    .SET  1H
XNM2    .SET  2H
YN      .SET  3H
YNM1    .SET  4H
YNM2    .SET  5H
XN1     .SET  6H
XN1M1   .SET  7H
XN1M2   .SET  8H
YN1     .SET  9H
YN1M1   .SET  0AH
YN1M2   .SET  0BH
TEMP    .SET  0CH
A10     .SET  0100H
A11     .SET  0FFEDH
A12     .SET  002CH
B10     .SET  0100H
B11     .SET  0FE00H
B12     .SET  0100H

```

.mmregs

.text

START:

```

STM    #40H,PMST
RSBX   CPL
STM    #01H,ST0
RSBX   FRCT
NOP
NOP
NOP
;initialize xn,x(n-1),x(n-2),yn,y(n-1),y(n-2)
ST     #0H,XN
ST     #0H,XNM1
ST     #0H,XNM2
ST     #0H,YN
ST     #0H,YNM1
ST     #0H,YNM2
ST     #0H,XN1
ST     #0H,XN1M1
ST     #0H,XN1M2
ST     #0H,YN1
ST     #0H,YN1M1
ST     #0H,YN1M2
REPEAT:
;to read data from ADC
PORTR  06,20          ;start of conversion
CHK_BUSY:          ;check status
; PORTR  07,20
; BITF   20,#20H
; BC     CHK_BUSY,TC
PORTR  04,20          ;read ADC data
LD     20,A
AND    #0FFFH,A
XOR    #0800H,A        ;to correct 2's complement
SUB    #800H,A
STL    A,XN            ;xn
STL    A,TEMP
LD     #0H,B           ;sum = B = 0
LD     #B10,A          ;b0 = T
STLM   A,T
MPY    XN,A            ;b0*xn = A
SFTL   A,-8
ADD    A,B             ;b0*xn =B
LD     #B11,A          ;b0 = T
STLM   A,T
MPY    XNM1,A          ;b0*xn = A
SFTL   A,-8
ADD    A,B             ;b0*xn =B
LD     #B12,A          ;b0 = T
STLM   A,T
MPY    XNM2,A          ;b0*xn = A
SFTL   A,-8

```

```

ADD  A,B           ;b0*xn =B
LD   #A11,A       ;b0 = T
STLM A,T
MPY  YNM1,A        ;b0*xn = A
SFTL A,-8
SUB  A,B           ;b0*xn =B
LD   #A12,A       ;b0 = T
STLM A,T
MPY  YNM2,A        ;b0*xn = A
SFTL A,-8
SUB  A,B           ;b0*xn =B
STL  B,YN
STL  B,XN1
LD   YNM1,A
STL  A,YNM2
LD   YN,A
STL  A,YNM1
LD   XNM1,A
STL  A,XNM2
LD   XN,A
STL  A,XNM1
LD   YN,A
ADD  #800H,A
STL  A,YN
PORTW YN,04H
B    REPEAT

```

BAND PASS FILTER

```

Filter type      : Band pass filter
Filter order     2
Filter design type : Chebyshev-I
Pass band attenuation : 3db
Edge frequencies:
f1              : 0.1
f2              : 0.125
f3              : 0.15
f4              : 0.175
Sampling freq    : 50Khz
Cut-off freq1    : 5Khz
Cut-off freq2    : 7.5Khz

```

FROM PCDSP COEFFICIENTS

```

XN      .SET  0H
XNM1    .SET  1H
XNM2    .SET  2H
YN      .SET  3H
YNM1    .SET  4H

```



```

YNM2      .SET  5H
XN1       .SET  6H
XN1M1     .SET  7H
XN1M2     .SET  8H
YN1       .SET  9H
YN1M1     .SET  0AH
YN1M2     .SET  0BH
TEMP      .SET  0CH
A10       .SET  0100H
A11       .SET  0FECBH
A12       .SET  00DAH
B10       .SET  0100H
B11       .SET  0000H
B12       .SET  0FF00H

        .mmregs
        .text
START:
        STM    #40H,PMST
        RSBX   CPL
        STM    #01H,ST0
        RSBX   FRCT
        NOP
        NOP
        NOP
;initialize xn,x(n-1),x(n-2),yn,y(n-1),y(n-2)
        ST     #0H,XN
        ST     #0H,XNM1
        ST     #0H,XNM2
        ST     #0H,YN
        ST     #0H,YNM1
        ST     #0H,YNM2
        ST     #0H,XN1
        ST     #0H,XN1M1
        ST     #0H,XN1M2
        ST     #0H,YN1
        ST     #0H,YN1M1
        ST     #0H,YN1M2
REPEAT:
;to read data from ADC
        PORTR  06,20                ;start of conversion
CHK_BUSY:                ;check status
        PORTR  07,20
        BITF   20,#20H
        BC     CHK_BUSY,TC
        PORTR  04,20                ;read ADC data
        LD     20,A
        AND    #0FFFH,A
        XOR    #0800H,A            ;to correct 2's complement
        SUB    #800H,A

```

```

STL  A,XN          ;xn
STL  A,TEMP
LD   #0H,B         ;sum = B = 0
LD   #B10,A        ;b0 = T
STLM A,T
MPY  XN,A           ;b0*xn = A
SFTL A,-8
ADD  A,B            ;b0*xn =B
LD   #B11,A        ;b0 = T
STLM A,T
MPY  XNM1,A         ;b0*xn = A
SFTL A,-8
ADD  A,B            ;b0*xn =B
LD   #B12,A        ;b0 = T
STLM A,T
MPY  XNM2,A         ;b0*xn = A
SFTL A,-8
ADD  A,B            ;b0*xn =B
LD   #A11,A        ;b0 = T
STLM A,T
MPY  YNM1,A         ;b0*xn = A
SFTL A,-8
SUB  A,B            ;b0*xn =B
LD   #A12,A        ;b0 = T
STLM A,T
MPY  YNM2,A         ;b0*xn = A
SFTL A,-8
SUB  A,B            ;b0*xn =B
STL  B,YN
STL  B,XN1
LD   YNM1,A
STL  A,YNM2
LD   YN,A
STL  A,YNM1
LD   XNM1,A
STL  A,XNM2
LD   XN,A
STL  A,XNM1
LD   YN,A
ADD  #800H,A
STL  A,YN
PORTW YN,04H
B    REPEAT

```

RESULT:

Thus the asm program for the design of IIR filter were plotted successfully.

Ex No: 12

Date :

DECIMATION

PROGRAM DESCRIPTION:

In this program the sampling rate at the input is 40Khz. This input sampling rate is reduced by a factor of 2 at the output. For this, the auxillary register AR3 is loaded with the value of 2 initially. Then the output of the FIR filter is sent out to the dac only once out of 2 outputs.

i.e whenever the register AR3 becomes 0, the filter output is sent to the dac and reloaded with 2. where 2 is the decimation factor of this decimator.

```
B3      .SET      0F000H
B2      .SET      0F00H
B1      .SET      00F0H
B0      .SET      000FH
DATA    .SET      50H
TXD     .SET      51H
```

```
.mmregs
```

```
.text
```

START:

```
STM     #01h,ST0      ;initialize the data page pointer
RSBX    CPL           ;make the processor to work using DP
RSBX    FRCT          ;reset the fractional mode bit
NOP
NOP
NOP
NOP
STM     #150H,AR1      ;initialize AR1 with x(n)
LD      #0H,A          ;make acc. zero
RPT     #34H
STL     A,*AR1+        ;make all x(n) zero
STM     #2H,AR3        ;load the decimation factor
```

REPDECI:

```
STM     #0A200H,AR4
STM     #2159,AR5
```

*****starting of the filter*****

LOOP:

PORTR 06,0 ;start of conversion

CHK_BUSY:

PORTR 07,0 ; check for busy

BITF 0,#20H

BC CHK_BUSY,TC

PORTR 04,0 ;read the adc data

LD 0,A

AND #0FFFH,A ;AND adc data with 0fffh for 12 bit adc.

XOR #0800H,A ;recorrect the 2's complement adc output.

SUB #800H,A ;remove the dc shift.

STM #150H,AR1 ;initialize ar1 with x(0)

STL A,*AR1 ;store the adc data in x(0)

STM #183H,AR2 ;initialize ar2 with x(n)

*****start of convolution*****

LD #0H,A ;initialize the sum as zero

RPT #33H

MACD *AR2-,TABLE,A ;convolution operation

STH A,1,0H

LD 0H,A

ADD #800H,A ;add the dc shift

STL A,1H

BANZ NO_OUT,*AR3- ;send the filter output only if ar3 is 0.

PORTW 1H,04H

STL A,*AR4+

STM #2H,AR3 ;reinitialize ar3 with decimation factor.

B DECI_END

B LOOP

NO_OUT:

NOP

NOP

NOP

B LOOP ;repeat the above.

DECI_END:

BANZ LOOP,*AR5

STM #140H,ST0

RSBX CPL

NOP

NOP

NOP

NOP

STM #0A200H,AR4

STM #359,AR5

REPSE:

LD *AR4+,A

SUB #2048,A

```

    STL  A,DATA
    CALL SERIAL
    STM  #140H,ST0
    RSBX CPL
    NOP
    NOP
    NOP
    NOP
    BANZ REPSE, *AR5-
    STM  #01h,ST0      ;initialize the data page pointer
    RSBX CPL           ;make the processor to work using DP
    RSBX FRCT          ;reset the fractional mode bit
    NOP
    NOP
    NOP
    NOP
    B    REPDECI
HLT:  B    HLT
SERIAL:
    STM  #140H,ST0
    RSBX CPL
    NOP
    NOP
    NOP
    NOP
    LD   #25H,A
    CALL TXDATA
    STM  #140H,ST0
    RSBX CPL
    NOP
    NOP
    NOP
    NOP
    LD   DATA,A
    AND  #B3,A          ;1st digit (from msb)
    SFTL A,-12
    CALL HEXASC
    CALL TXDATA
    STM  #140H,ST0
    RSBX CPL
    NOP
    NOP
    NOP
    NOP
    LD   DATA,A
    AND  #B2,A          ;1st digit (from msb)
    SFTL A,-8
    CALL HEXASC
    CALL TXDATA

```

```

STM    #140H,ST0
RSBX CPL
NOP
NOP
NOP
NOP
LD DATA,A
AND    #B1,A      ;1st digit (from msb)
SFTL A,-4
CALL   HEXASC
CALL   TXDATA
STM    #140H,ST0
RSBX CPL
NOP
NOP
NOP
NOP
LD DATA,A
AND    #B0,A      ;1st digit (from msb)
CALL   HEXASC
CALL   TXDATA
STM    #140H,ST0
RSBX CPL
NOP
NOP
NOP
NOP
LD    #24H,A
CALL   TXDATA
STM    #140H,ST0
RSBX CPL
NOP
NOP
NOP
NOP
RET
HEXASC:
ADD    #30H,A
LD     A,B
SUB    #3AH,B
BC     LESS9,BLT
ADD    #7H,A
LESS9:
RET
TXDATA:
CALL   8C69H      ;8C38H for 5416 mode 1
SSBX INTM
rpt    #2ffh      ;delay
nop

```

RET

TABLE:

.word 01FH
.word 010EH
.word 01ABH
.word 01B4H
.word 0117H
.word 0H
.word 0FECDH
.word 0FDEEH
.word 0FDC2H
.word 0FE6EH
.word 0FFCDH
.word 016FH
.word 02C0H
.word 0333H
.word 0274H
.word 097H
.word 0FE19H
.word 0FBCBH
.word 0FA9BH
.word 0FB53H
.word 0FE50H
.word 0362H
.word 09C5H
.word 01048H
.word 01599H
.word 01895H
.word 01895H
.word 01599H
.word 01048H
.word 09C5H
.word 0362H
.word 0FE50H
.word 0FB53H
.word 0FA9BH
.word 0FBCBH
.word 0FE19H
.word 097H
.word 0274H
.word 0333H
.word 02C0H
.word 016FH
.word 0FFCDH
.word 0FE6EH
.word 0FDC2H
.word 0FDEEH
.word 0FECDH
.word 0H

```
.word 0117H  
.word 01B4H  
.word 01ABH  
.word 010EH  
.word 01FH
```

RESULT:

Thus the asm program for the design of decimated were successfully.